

LEA Name : Morrisville Borough SD  
Address : 550 W Palmer St  
Morrisville , PA 19067

County : Bucks  
AUN Number : 122097203  
LEA Type : SD

**Annual Financial Report**  
**Accuracy Certification Statement**

For Fiscal Year Ending  
**6/30/2017**

Pennsylvania Department of Education  
&  
Office of Comptroller Operations

PDE-2056: Intermediate Unit  
PDE-2057: School District, AVTS/CTC, Charter School,  
and Special Program Jointure

**CERTIFICATION: By signing this page I agree that the electronic data submitted is a complete and accurate statement of the financial operations and status of the local education agency for the fiscal year. It has been prepared in accordance with generally accepted accounting principles and established Commonwealth of PA reporting guidelines.**

Michail J. Kopala  
Chief School Administrator Signature

4/9/18  
Date

Mu Kufal  
Board Secretary Signature

4/9/18  
Date

Jason B Harris  
Contact Person

(215)736-5932 Ext :  
Contact Person Telephone Number

jharris@mv.org  
Contact Person E-mail Address

(215)736-3958  
Contact Person Fax Number

**Audit Certification**  
**Annual Financial Report:**  
For Fiscal Year Ending **6/30/2017**  
**(Pursuant to PA School Code Section 218(b))**

LEA Name : Morrisville Borough SD  
AUN Number : 122097203  
County : Bucks

<b>Audit Certification Due:</b> 12/31/2017
---

This certification is applicable to the Annual Financial Report data submitted through the Consolidated Financial Reporting System on: 11-29-2017  
Date

Auditing Firm: BBD, LLP  
1835 Market St 26th Fl.  
Philadelphia PA 19103

Auditor Contact Name: Carl Hogan  
Auditor Phone: (215) 567-7770 x 6027  
Auditor E-mail: chogan@bbdcpa.com

CERTIFICATION: By signing this page I agree that the financial statements of the school have been properly audited as noted above pursuant to Article XXIV, and in the auditor's professional opinion, the Annual Financial Report (PDE-2057) submitted on the date referenced is materially consistent with the audited financial statements.

Chief School Administrator

Board Secretary

Michael J. Kapakowski 11-29-2017  
Signature Date

[Signature] 11-29-2017  
Signature Date

Jason B Harris  
Contact Person

jharris@mv.org  
Contact Person E-mail Address

(215)736-5932 Ext :  
Contact Person Telephone Number

(215)736-3958  
Contact Person Fax Number

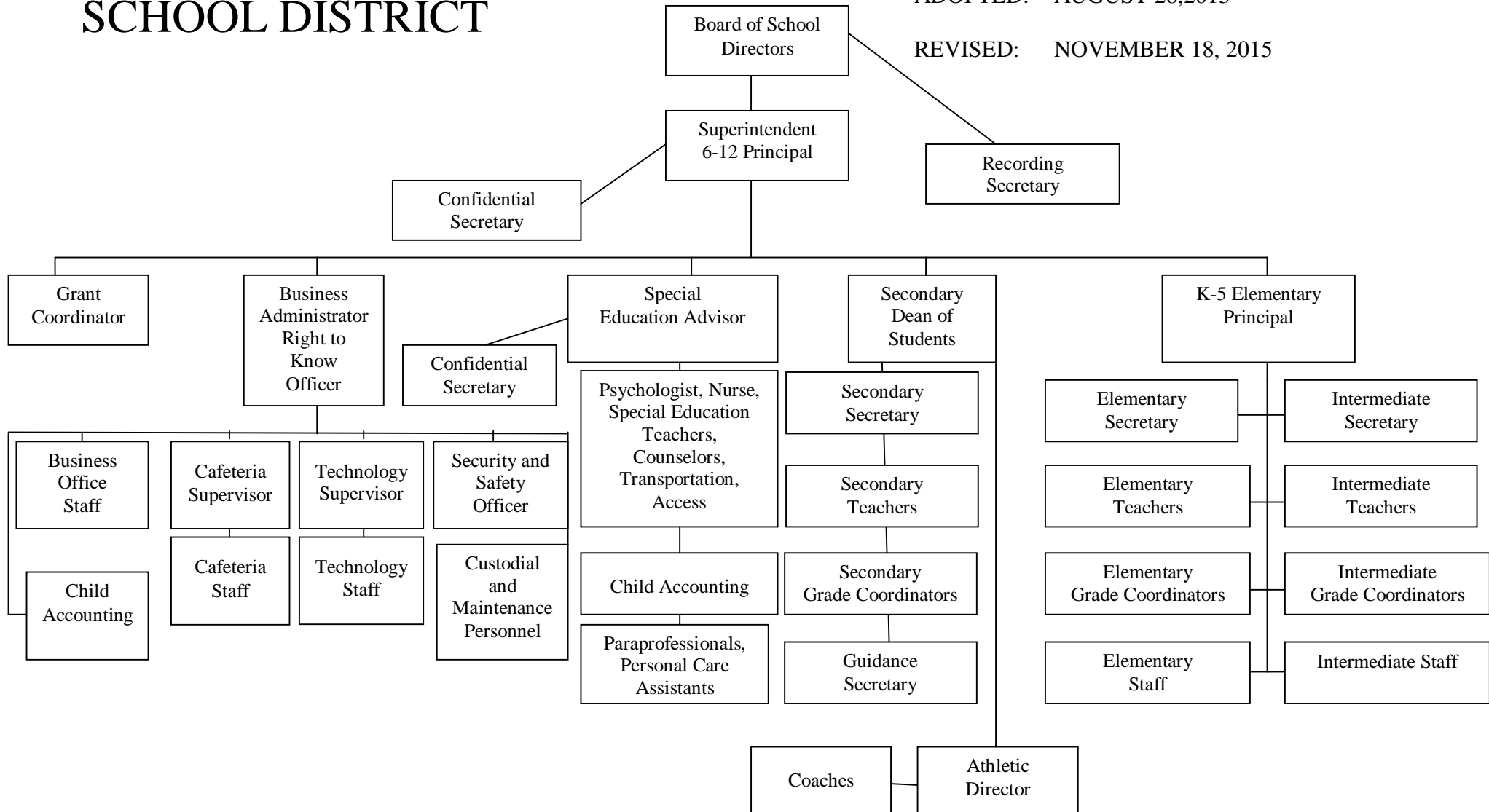
# MORRISVILLE BOROUGH SCHOOL DISTRICT

SECTION: LOCAL BOARD PROCEDURES

TITLE: ORGANIZATION CHART

ADOPTED: AUGUST 28, 2013

REVISED: NOVEMBER 18, 2015



<u>Val Number</u>	<u>Description</u>	<u>Justification</u>
50400	SESS - 2120 Guidance Services: SESS Schedule amounts for Special Education vary from prior year by 40% or more. Correct the data or enter a justification.  SESS Schedule 2120: \$88,032.00 Prior Year SESS Schedule 2120: \$61,221.00	INCREASE DUE TO AN INCREASE IN SPECIAL EDUCATION ENROLLMENT COUNT THEREFORE INCREASING SPECIAL EDUCATION ALLOCATION AT SCHEDULE.
50410	SESS - 2140 Psychological Services: SESS Schedule amounts for Special Education vary from prior year by 40% or more. Correct the data or enter a justification.  SESS Schedule 2140: \$15,816.00 Prior Year SESS Schedule 2140: \$11,075.00	INCREASE DUE TO AN INCREASE IN SPECIAL EDUCATION ENROLLMENT COUNT THEREFORE INCREASING SPECIAL EDUCATION ALLOCATION AT SCHEDULE.
50450	SESS - 2350 Legal and Accounting Services: SESS Schedule amounts for Special Education vary from prior year by 40% or more. Correct the data or enter a justification.  SESS Schedule 2350: \$27,101.00 Prior Year SESS Schedule 2350: \$12,242.00	INCREASE IN LEGAL FEES IN THE CURRENT YEAR COMPARED WITH THE PRIOR YEAR.
50460	SESS - 2420 Medical Services: SESS Schedule amounts for Special Education vary from prior year by 40% or more. Correct the data or enter a justification.  SESS Schedule 2420: \$128.00 Prior Year SESS Schedule 2420: \$585.00	REDUCTION IN MEDICAL PROFESSIONAL FEES IN CURRENT YEAR AS A RESULT OF INCREASING NURSING STAFF.
50470	SESS - 2440 Nursing Services: SESS Schedule amounts for Special Education vary from prior year by 40% or more. Correct the data or enter a justification.  SESS Schedule 2440: \$38,981.00 Prior Year SESS Schedule 2440: \$26,376.00	INCREASE DUE TO AN INCREASE IN NURSING STAFF IN THE CURRENT YEAR.

Amounts Expressed in Whole Dollars	<u>General Fund</u> <u>(10)</u>	<u>Public Purpose Trust</u> <u>(27)</u>	<u>Other Compt Approved</u> <u>(28)</u>	<u>Athletic / Activity</u> <u>(29)</u>	<u>Capital Reserve (690.</u> <u>1850)</u> <u>(31)</u>
<b>Assets And Deferred Outflows Of Resources</b>					
<b>Assets</b>					
0100 Cash and Cash Equivalents	2,641,068				
0110 Investments	762,020				
0120 Taxes Receivable	592,124				
0130 Due From Other Funds					
0141 Due From Other Governments	467,528				
0142 State Revenue Receivable					
0143 Federal Revenue Receivable					
0145 Other Intergovernmental Revenue Receivable					
0146 Due from Primary Government					
0147 Due from Component Unit					
0150 Other Receivables	38,773				
0170 Inventories					
0180 Prepaid Expenses (Expenditures)					
0190 Other Current Assets					
<b>Total Assets</b>	<b>\$4,501,513</b>				
0910 Deferred Outflows of Resources					
<b>Total Assets And Deferred Outflows Of Resources</b>	<b>\$4,501,513</b>				

Amounts Expressed in Whole Dollars

	<u>Capital Reserve (1431)</u> <u>(32)</u>	<u>Other Capital Projects</u> <u>Fund</u> <u>(39)</u>	<u>Debt Service</u> <u>(40)</u>	<u>Permanent</u> <u>(90)</u>	<u>Total Governmental</u> <u>Funds</u>
<b>Assets And Deferred Outflows Of Resources</b>					
<b>Assets</b>					
0100 Cash and Cash Equivalents	590,400				3,231,468
0110 Investments					762,020
0120 Taxes Receivable					592,124
0130 Due From Other Funds					
0141 Due From Other Governments					467,528
0142 State Revenue Receivable					
0143 Federal Revenue Receivable					
0145 Other Intergovernmental Revenue Receivable					
0146 Due from Primary Government					
0147 Due from Component Unit					
0150 Other Receivables					38,773
0170 Inventories					
0180 Prepaid Expenses (Expenditures)					
0190 Other Current Assets					
<b>Total Assets</b>	<b>\$590,400</b>				<b>\$5,091,913</b>
0910 Deferred Outflows of Resources					
<b>Total Assets And Deferred Outflows Of Resources</b>	<b>\$590,400</b>				<b>\$5,091,913</b>

Amounts Expressed in Whole Dollars

<u>General Fund</u>	<u>Public Purpose Trust</u>	<u>Other Compt Approved</u>	<u>Athletic / Activity</u>	<u>Capital Reserve (690.</u>
<u>(10)</u>	<u>(27)</u>	<u>(28)</u>	<u>(29)</u>	<u>1850)</u>
				<u>(31)</u>

**Liabilities And Deferred Inflows Of Resources And Fund Balances**

**Liabilities**

0400 Due to Other Funds	
0411 Due to Other Governments	
0412 Due to Primary Government	
0413 Due to Component Unit	
0420 Accounts Payable	309,934
0430 Contracts Payable	
0440 Current Portion of Long-Term Debt	
0450 Short-Term Payables	
0461 Accrued Salaries and Benefits	1,106,705
0462 Payroll Deductions and Withholding	
0480 Unearned Revenues	
0490 Other Current Liabilities	14,261

**Total Liabilities** **\$1,430,900**

0950 Deferred Inflows of Resources	504,471
------------------------------------	---------

**Fund Balances**

0810 Nonspendable Fund Balance	
0820 Restricted Fund Balance	
0830 Committed Fund Balance	2,464,242
0840 Assigned Fund Balance	
0850 Unassigned Fund Balance	101,900

**Total Fund Balances** **\$2,566,142**

**Total Liabilities, Deferred Inflows Of Resources And Fund Balances** **\$4,501,513**

Amounts Expressed in Whole Dollars

<u>Capital Reserve (1431)</u>	<u>Other Capital Projects</u>	<u>Debt Service</u>	<u>Permanent</u>	<u>Total Governmental</u>
<u>(32)</u>	<u>Fund</u>	<u>(40)</u>	<u>(90)</u>	<u>Funds</u>
	<u>(39)</u>			

**Liabilities And Deferred Inflows Of Resources And Fund Balances**

<b>Liabilities</b>				
0400	Due to Other Funds			
0411	Due to Other Governments			
0412	Due to Primary Government			
0413	Due to Component Unit			
0420	Accounts Payable	6,564		316,498
0430	Contracts Payable			
0440	Current Portion of Long-Term Debt			
0450	Short-Term Payables			
0461	Accrued Salaries and Benefits			1,106,705
0462	Payroll Deductions and Withholding			
0480	Unearned Revenues			
0490	Other Current Liabilities			14,261
<b>Total Liabilities</b>		<b>\$6,564</b>		<b>\$1,437,464</b>
0950	Deferred Inflows of Resources			504,471
<b>Fund Balances</b>				
0810	Nonspendable Fund Balance			
0820	Restricted Fund Balance	583,836		583,836
0830	Committed Fund Balance			2,464,242
0840	Assigned Fund Balance			
0850	Unassigned Fund Balance			101,900
<b>Total Fund Balances</b>		<b>\$583,836</b>		<b>\$3,149,978</b>
<b>Total Liabilities, Deferred Inflows Of Resources And Fund Balances</b>		<b>\$590,400</b>		<b>\$5,091,913</b>



Amounts Expressed in Whole Dollars	<u>General Fund</u> <u>(10)</u>	<u>Public Purpose Trust</u> <u>(27)</u>	<u>Other Compt Approved</u> <u>(28)</u>	<u>Athletic / Activity</u> <u>(29)</u>	<u>Capital Reserve (690.</u> <u>1850)</u> <u>(31)</u>
<b>Revenues</b>					
6000 Revenue from Local Sources	12,350,622				
7000 Revenue from State Sources	7,269,704				
8000 Revenue from Federal Sources	876,461				
<b>Total Revenues</b>	<b>\$20,496,787</b>				
<b>Expenditures</b>					
1000 Instruction	13,852,695				
2000 Support Services	4,728,404				
3000 Operation of Non-Instructional Services	535,503				
4000 Facilities Acquisition, Construction and Improvement Services					
5110 Debt Service	812,522				
5130 Refund of Prior Year Revenues / Receipts	4,940				
<b>Total Expenditures</b>	<b>\$19,934,064</b>				
<b>Excess (Deficiency) Of Revenues Over Expenditures</b>	<b>\$562,723</b>				
<b>Other Financing Sources (Uses)</b>					
9110 Face Value of Bonds Issued					
9120 Proceeds from Refunding of Bonds					
9130 Bond Premiums					
9200 Proceeds from Extended-Term Financing					
9300 Interfund Transfers - IN	567				
9400 Sale of or Compensation for Loss of Fixed Assets					
9710 Transfers from Component Units					
9720 Transfers from Primary Governments					
9910 Other Financing Sources Not Listed in the 9000 Series					
9990 Insurance Recoveries					
5120 Debt Service – Refunded Bonds					
5150 Bond Discounts					
5200 Interfund Transfers – Out	666,400				
5300 Transfers Out to Component Units/Primary Governments					
<b>Total Other Financing Sources (Uses)</b>	<b>(\$665,833)</b>				

Amounts Expressed in Whole Dollars	<u>Capital Reserve (1431)</u> <u>(32)</u>	<u>Other Capital Projects</u> <u>Fund</u> <u>(39)</u>	<u>Debt Service</u> <u>(40)</u>	<u>Permanent</u> <u>(90)</u>	<u>Total Governmental</u> <u>Funds</u>
<b>Revenues</b>					
6000 Revenue from Local Sources	2,229				12,352,851
7000 Revenue from State Sources					7,269,704
8000 Revenue from Federal Sources					876,461
<b>Total Revenues</b>	<b>\$2,229</b>				<b>\$20,499,016</b>
<b>Expenditures</b>					
1000 Instruction					13,852,695
2000 Support Services	118,972				4,847,376
3000 Operation of Non-Instructional Services					535,503
4000 Facilities Acquisition, Construction and Improvement Services	13,128				13,128
5110 Debt Service					812,522
5130 Refund of Prior Year Revenues / Receipts					4,940
<b>Total Expenditures</b>	<b>\$132,100</b>				<b>\$20,066,164</b>
<b>Excess (Deficiency) Of Revenues Over Expenditures</b>	<b>(\$129,871)</b>				<b>\$432,852</b>
<b>Other Financing Sources (Uses)</b>					
9110 Face Value of Bonds Issued					
9120 Proceeds from Refunding of Bonds					
9130 Bond Premiums					
9200 Proceeds from Extended-Term Financing					
9300 Interfund Transfers - IN	600,000				600,567
9400 Sale of or Compensation for Loss of Fixed Assets					
9710 Transfers from Component Units					
9720 Transfers from Primary Governments					
9910 Other Financing Sources Not Listed in the 9000 Series					
9990 Insurance Recoveries					
5120 Debt Service – Refunded Bonds					
5150 Bond Discounts					
5200 Interfund Transfers – Out				567	666,967
5300 Transfers Out to Component Units/Primary Governments					
<b>Total Other Financing Sources (Uses)</b>	<b>\$600,000</b>	<b>(\$567)</b>			<b>(\$66,400)</b>

Amounts Expressed in Whole Dollars	<u>General Fund</u> <u>(10)</u>	<u>Public Purpose Trust</u> <u>(27)</u>	<u>Other Compt Approved</u> <u>(28)</u>	<u>Athletic / Activity</u> <u>(29)</u>	<u>Capital Reserve</u> <u>(690.</u> <u>1850)</u> <u>(31)</u>
<b>Special And Extraordinary Items</b>					
9920 Special Items – Gains					
9930 Extraordinary Items – Gains					
5520 Special Items – Losses					
5530 Extraordinary Items – Losses					
<b>Net Change In Fund Balances</b>	<b>(\$103,110)</b>				
<b>Fund Balance</b>					
0001 Fund Balance - Beginning of Fiscal Year	2,669,252				
<b>Fund Balance - End Of Year</b>	<b>\$2,566,142</b>				

Amounts Expressed in Whole Dollars	<u>Capital Reserve (1431)</u> <u>(32)</u>	<u>Other Capital Projects</u> <u>Fund</u> <u>(39)</u>	<u>Debt Service</u> <u>(40)</u>	<u>Permanent</u> <u>(90)</u>	<u>Total Governmental</u> <u>Funds</u>
<b>Special And Extraordinary Items</b>					
9920 Special Items – Gains					
9930 Extraordinary Items – Gains					
5520 Special Items – Losses					
5530 Extraordinary Items – Losses					
<b>Net Change In Fund Balances</b>	<b>\$470,129</b>	<b>(\$567)</b>			<b>\$366,452</b>
<b>Fund Balance</b>					
0001 Fund Balance - Beginning of Fiscal Year	113,707	567			2,783,526
<b>Fund Balance - End Of Year</b>	<b>\$583,836</b>				<b>\$3,149,978</b>

Amounts Expressed in Whole Dollars	<u>Food Service</u> <u>(51)</u>	<u>Child Care</u> <u>Operations</u> <u>(52)</u>	<u>Other Enterprise</u> <u>(58)</u>	<u>TOTAL</u>	<u>Internal Service</u> <u>(60)</u>
<b>Assets And Deferred Outflows Of Resources</b>					
<b>Current Assets</b>					
0100 Cash and Cash Equivalents	23,349			23,349	
0110 Investments					
0130 Due From Other Funds					
0141 Due From Other Governments	49,004			49,004	
0142 State Revenue Receivable					
0143 Federal Revenue Receivable					
0146 Due from Primary Government					
0147 Due from Component Unit					
0150 Other Receivables					
0170 Inventories	5,009			5,009	
0180 Prepaid Expenses (Expenditures)					83,474
0190 Other Current Assets					
<b>Total Current Assets</b>	<b>\$77,362</b>			<b>\$77,362</b>	<b>\$83,474</b>
<b>Noncurrent Assets</b>					
0211 Land					
0212 Site Improvements (Net)					
0220 Buildings and Building Improvements (Net)					
0230 Machinery, Equipment and Furniture (Net)	12,406			12,406	
0250 Construction in Progress					
0260 Long Term Prepayments					
0290 Other Noncurrent Assets					
<b>Total Noncurrent Assets</b>	<b>\$12,406</b>			<b>\$12,406</b>	
0910 Deferred Outflows of Resources					
<b>Total Assets And Deferred Outflows Of Resources</b>	<b>\$89,768</b>			<b>\$89,768</b>	<b>\$83,474</b>

Amounts Expressed in Whole Dollars	<u>Food Service</u> <u>(51)</u>	<u>Child Care</u> <u>Operations</u> <u>(52)</u>	<u>Other Enterprise</u> <u>(58)</u>	<u>TOTAL</u>	<u>Internal Service</u> <u>(60)</u>
<b>Liabilities And Deferred Inflows Of Resources And Net Position</b>					
<b>Current Liabilities</b>					
0400 Due to Other Funds					
0411 Due to Other Governments					
0413 Due to Component Unit					
0420 Accounts Payable	73,042			73,042	
0430 Contracts Payable					
0440 Current Portion of Long-Term Debt					
0450 Short-Term Payables					
0461 Accrued Salaries and Benefits					
0462 Payroll Deductions and Withholding					
0480 Unearned Revenues					
0490 Other Current Liabilities					68,911
<b>Total Current Liabilities</b>	<b>\$73,042</b>			<b>\$73,042</b>	<b>\$68,911</b>
<b>Noncurrent Liabilities</b>					
0510 Bonds Payable					
0520 Extended-Term Financing Agreements Payable					
0530 Lease-Purchase Obligations					
0540 Accumulated Compensated Absences					
0550 Authority Lease Obligations					
0560 Other Post-Employment Benefits (OPEB)					
0570 Net Pension Liability					
0599 Other Noncurrent Liabilities					
<b>Total Noncurrent Liabilities</b>					
<b>Total Liabilities</b>	<b>\$73,042</b>			<b>\$73,042</b>	<b>\$68,911</b>
0950 Deferred Inflows of Resources					
<b>Net Position</b>					
0791 Net Investment in Capital Assets	12,406			12,406	
0008 Restricted Net Position (0792 – 0798)					
0799 Unrestricted Net Position	4,320			4,320	14,563
<b>Total Net Position</b>	<b>\$16,726</b>			<b>\$16,726</b>	<b>\$14,563</b>
<b>Total Liabilities And Deferred Inflows Of Resources And Net Position</b>	<b>\$89,768</b>			<b>\$89,768</b>	<b>\$83,474</b>

Amounts Expressed in Whole Dollars	<u>Food Service</u> <u>(51)</u>	<u>Child Care Operations</u> <u>(52)</u>	<u>Other Enterprise</u> <u>(58)</u>	<u>TOTAL</u>	<u>Internal Service</u> <u>(60)</u>
<b>Operating Revenues</b>					
6600 Food Service Revenue	112,689			112,689	
0071 Charges for Services					1,337,409
0072 Other Operating Revenue					
<b>Total Operating Revenues</b>	<b>\$112,689</b>			<b>\$112,689</b>	<b>\$1,337,409</b>
<b>Operating Expenses</b>					
100 Personnel Services – Salaries	189,563			189,563	
200 Personnel Services – Employee Benefits	63,947			63,947	1,433,447
300 Purchased Professional and Technical Services					51,101
400 Purchased Property Services					
500 Other Purchased Services	33,975			33,975	
600 Supplies	219,583			219,583	
740 Depreciation	2,681			2,681	
810 Dues and Fees					
890 Miscellaneous Expenditures					
<b>Total Operating Expenses</b>	<b>\$509,749</b>			<b>\$509,749</b>	<b>\$1,484,548</b>
<b>Operating Income (Loss)</b>	<b>(\$397,060)</b>			<b>(\$397,060)</b>	<b>(\$147,139)</b>
<b>Non Operating Revenues (Expenses)</b>					
6500 Earnings on Investments					
6920 Contributions and Donations from Private Sources					
6930 Gains or Losses on Sale of Fixed Assets					
6991 Refunds of a Prior Year Expenditure					
7000 Revenue from State Sources	13,579			13,579	
8000 Revenue from Federal Sources	312,682			312,682	
820 Claims and Judgments Against the LEA					
830 Interest					
<b>TOTAL Non Operating Revenues (Expenses)</b>	<b>\$326,261</b>			<b>\$326,261</b>	
<b>Income (Loss) Before Contributions And Transfers</b>	<b>(\$70,799)</b>			<b>(\$70,799)</b>	<b>(\$147,139)</b>

Amounts Expressed in Whole Dollars	<u>Food Service</u> <u>(51)</u>	<u>Child Care Operations</u> <u>(52)</u>	<u>Other Enterprise</u> <u>(58)</u>	<u>TOTAL</u>	<u>Internal Service</u> <u>(60)</u>
<b>Contributions, Transfers, and Special and Extraordinary Items</b>					
5200 Interfund Transfers – Out					
5300 Transfers Out to Component Units/Primary Governments					
5520 Special Items – Losses					
5530 Extraordinary Items – Losses					
9300 Interfund Transfers - IN	66,400			66,400	
9500 Capital Contributions					
9700 Transfers IN From Component Units/Primary Governments					
9920 Special Items – Gains					
9930 Extraordinary Items – Gains					
<b>Change In Net Position</b>	<b>(\$4,399)</b>			<b>(\$4,399)</b>	<b>(\$147,139)</b>
0002 Net Position - Beginning of Fiscal Year	21,125			21,125	161,702
0003 Accounting Changes / Residual Equity Transfers					
<b>Net Position - End Of Year</b>	<b>\$16,726</b>			<b>\$16,726</b>	<b>\$14,563</b>



LEA : 122097203 Morrisville Borough SD

Printed 4/27/2018 3:41:28 PM

Amounts Expressed in Whole Dollars	<u>Food Service</u> <u>(51)</u>	<u>Child Care Operations</u> <u>(52)</u>	<u>Other Enterprise</u> <u>(58)</u>	<u>TOTAL</u>	<u>Internal Service(60)</u>
<b>Cash Flows From Operating Activities</b>					
0011 Cash Receipts From Users	112,689			112,689	
0012 Cash Receipts From Assessments Made to Other Funds					1,473,201
0013 Cash Receipts From Earnings on Investments					
0014 Cash Receipts From Other Operating Revenue					
0015 Cash Payments To Employees For Services					
0016 Cash Payments For Insurance Claims					1,422,100
0017 Cash Payments To Suppliers For Goods and Services					
0018 Cash Payments For Other Operating Expenses	540,527			540,527	51,101
<b>Net Cash Provided By (Used For) Operating Activities</b>	<b>(\$427,838)</b>			<b>(\$427,838)</b>	<b>\$0</b>
<b>Cash Flows From Non-Capital Financing Activities</b>					
0021 Receipts From Local Sources - 6000					
0022 Receipts From State Sources - 7000	13,301			13,301	
0023 Receipts From Federal Sources -8000	284,492			284,492	
0024 Notes and Loans Received (Repaid)					
0025 Interest Paid on Notes/Loans - 5100-830					
0026 Operating Transfers In (Out)/Residual Equity Trans	66,400			66,400	
0027 Operating Transfers In (Out) Primary Government / Comp Unit					
0028 Receipts From Refund of Prior Year Expenditures - 6991					
0029 Special and Extraordinary Gains (losses)					
<b>Net Cash Prov By (Used for) Non-Capital Financing Activities</b>	<b>\$364,193</b>			<b>\$364,193</b>	
<b>Cash Flows From Capital and Related Financing Activities</b>					
0031 Payments For Fac Acq, Const, and Imp - 4000					
0032 Gain / (Loss) on Sale of Fixed Assets - 6930					
0033 Proceeds From Extended Term Financing - 9200					
0034 Principal Paid on Financing Agreements					
0035 Interest Paid on Financing Agreements - 5100-830					
0036 (Inc) Dec in Contributed Capital					
<b>Net Cash Prov By (Used for) Capital and Related Financing Activities</b>					
<b>Cash Flows From Investing Activities</b>					
0041 Earnings on Investments - 6500					
0042 Purchase of Inv Securities / Deposits to Inv Pools					
0043 Receipts From Investment Pool Withdrawals					
0044 Proceeds from Sale and Maturity of Inv Securities					
0045 Loans Received (Paid)					
<b>Net Cash Prov By (Used for) Investing Activities</b>					

	<u>Food Service</u> <u>(51)</u>	<u>Child Care Operations</u> <u>(52)</u>	<u>Other Enterprise</u> <u>(58)</u>	<u>TOTAL</u>	<u>Internal Service</u> <u>(60)</u>
<b>Net Increase (Decrease) in Cash Flows</b>	<b>(63,645)</b>			<b>(63,645)</b>	
0004 Cash and Cash Equivalents Beginning of Year	86,994			86,994	
<b>Cash and Cash Equivalents at Year End</b>	<b>\$23,349</b>			<b>\$23,349</b>	

**Reconciliation of Operating Income (Loss) To Net Cash Provided by (Used For) Operating Activities**

0005 Operating Income (Loss) per REP	(397,060)			(397,060)	(147,139)
<b>Adjustments</b>					
0051 Depreciation and Net Amortization	2,681			2,681	
0052 Provision for Uncollectible Accounts					
0053 Other Adjustments	24,199			24,199	
<b>Effect of Changes in Assets, Liabilities, Deferred Outflows and Deferred Inflows</b>					
0054 (Inc) Dec In Accounts Receivable (0120-0150)					
0055 Advances to Other Funds (0160)	666			666	
0056 (Inc) Dec in Inventories (0170)	(75)			(75)	
0057 (Inc) Dec in Prepaid Expenses (0180)					135,792
0058 (Inc) Dec in Other Current or Noncurrent Assets					
0064 Deferred Outflows (0910)					
0059 Inc (Dec) in Accounts Payable (0400-0450)	(24,174)			(24,174)	
0060 Inc (Dec) in Accrued Salaries/Benefits (0461)					
0065 Inc (Dec) in Net Pension Liabilities (0570)					
0066 Inc (Dec) in Other Postemp Benefit Oblig (0560)					
0061 Inc (Dec) in Payroll Deductions/Withholding (0462)					
0062 Inc (Dec) in Unearned Revenue (0480)					
0063 Inc (Dec) in Other Current or Noncurrent Liabilities	(34,075)			(34,075)	11,347
0067 Deferred Inflows (0950)					
<b>Total Adjustments</b>	<b>(\$30,778)</b>			<b>(\$30,778)</b>	<b>\$147,139</b>
<b>Cash Provided By (Used for) Total</b>	<b>(\$427,838)</b>			<b>(\$427,838)</b>	

COMBINED STATEMENT OF CASH FLOWS  
SCHEDULE OF NONCASH INVESTING, CAPITAL, AND FINANCING ACTIVITIES

Explanation of Transaction and Balance Sheet Effect	Amount
USDA DONATED COMMODITY VALUE	24,199
<b>Total</b>	<b>\$24,199</b>

LEA : 122097203 Morrisville Borough SD

Printed 4/27/2018 3:41:28 PM

Amounts Expressed in Whole Dollars	<u>Private Purpose Trust</u> (71)	<u>Investment Trust</u> (72)	<u>Pension Trust</u> (73)	<u>Activity</u> (81)
<b>Assets And Deferred Outflows Of Resources</b>				
<b>Assets</b>				
0100 Cash and Cash Equivalents	26,099			34,005
0110 Investments				
0130 Due From Other Funds				
0147 Due from Component Unit				
0150 Other Receivables				
0170 Inventories				
0180 Prepaid Expenses (Expenditures)				
0190 Other Current Assets				
0220 Buildings and Building Improvements (Net)				
0230 Machinery, Equipment and Furniture (Net)				
<b>Total Assets</b>	<b>\$26,099</b>			<b>\$34,005</b>
0910 Deferred Outflows of Resources				
<b>Total Assets And Deferred Outflows Of Resources</b>	<b>\$26,099</b>			<b>\$34,005</b>

LEA : 122097203 Morrisville Borough SD

Printed 4/27/2018 3:41:28 PM

Amounts Expressed in Whole Dollars

	<u>Other Agency</u> <u>(89)</u>	<u>Discrete Component Units</u> <u>(98)</u>	<u>Discrete Component Units</u> <u>(99)</u>	<u>Total Fiduciary Funds</u>
<b>Assets And Deferred Outflows Of Resources</b>				
<b>Assets</b>				
0100 Cash and Cash Equivalents				60,104
0110 Investments				
0130 Due From Other Funds				
0147 Due from Component Unit				
0150 Other Receivables				
0170 Inventories				
0180 Prepaid Expenses (Expenditures)				
0190 Other Current Assets				
0220 Buildings and Building Improvements (Net)				
0230 Machinery, Equipment and Furniture (Net)				
<b>Total Assets</b>				<b>\$60,104</b>
0910 Deferred Outflows of Resources				
<b>Total Assets And Deferred Outflows Of Resources</b>				<b>\$60,104</b>

LEA : 122097203 Morrisville Borough SD

Printed 4/27/2018 3:41:28 PM

Amounts Expressed in Whole Dollars	<u>Private Purpose Trust</u> (71)	<u>Investment Trust</u> (72)	<u>Pension Trust</u> (73)	<u>Activity</u> (81)
<b>Liabilities, Deferred Inflows Of Resources And Net Position</b>				
<b>Liabilities</b>				
0400 Due to Other Funds				
0411 Due to Other Governments				
0412 Due to Primary Government				
0413 Due to Component Unit				
0420 Accounts Payable				
0430 Contracts Payable				
0450 Short-Term Payables				
0461 Accrued Salaries and Benefits				
0462 Payroll Deductions and Withholding				
0480 Unearned Revenues				
0490 Other Current Liabilities				34,005
<b>Total Liabilities</b>				<b>\$34,005</b>
0950 Deferred Inflows of Resources				
<b>Net Position</b>				
0791 Net Investment in Capital Assets				
0009 Restricted Net Position (0792 – 0798)	26,099			
0799 Unrestricted Net Position				
<b>Total Net Position</b>	<b>\$26,099</b>			
<b>Total Liabilities, Deferred Inflows Of Resources And Net Position</b>	<b>\$26,099</b>			<b>\$34,005</b>

LEA : 122097203 Morrisville Borough SD

Printed 4/27/2018 3:41:28 PM

Amounts Expressed in Whole Dollars

<u>Other Agency</u>	<u>Discrete Component Units</u>	<u>Discrete Component Units</u>	<u>Total Fiduciary Funds</u>
(89)	(98)	(99)	

**Liabilities, Deferred Inflows Of Resources And Net Position**

**Liabilities**

0400 Due to Other Funds				
0411 Due to Other Governments				
0412 Due to Primary Government				
0413 Due to Component Unit				
0420 Accounts Payable				
0430 Contracts Payable				
0450 Short-Term Payables				
0461 Accrued Salaries and Benefits				
0462 Payroll Deductions and Withholding				
0480 Unearned Revenues				
0490 Other Current Liabilities				34,005

<b>Total Liabilities</b>				<b>\$34,005</b>
--------------------------	--	--	--	-----------------

0950 Deferred Inflows of Resources

**Net Position**

0791 Net Investment in Capital Assets				
0009 Restricted Net Position (0792 – 0798)				26,099
0799 Unrestricted Net Position				

<b>Total Net Position</b>				<b>\$26,099</b>
---------------------------	--	--	--	-----------------

<b>Total Liabilities, Deferred Inflows Of Resources And Net Position</b>				<b>\$60,104</b>
--	--	--	--	-----------------

Amounts Expressed in Whole Dollars	<u>Private Purpose Trust</u> (71)	<u>Investment Trust</u> (72)	<u>Pension Trust</u> (73)	<u>Discrete Component</u> <u>Units</u> (98)	<u>Discrete Component</u> <u>Units</u> (99)	<u>Total Fiduciary</u> <u>Funds</u>
<b>Additions</b>						
0091 Gifts and Contributions	717					717
0092 Other Additions						
<b>Deductions</b>						
0093 Scholarships Awarded	605					605
0094 Other Deductions						
<b>Change In Net Position</b>	<b>\$112</b>					<b>\$112</b>
0006 Net Position – Beginning of Fiscal Year	25,987					25,987
0007 Net Position Held in Trust for Pension Benefits						
<b>Net Position - End of Fiscal Year</b>	<b>\$26,099</b>					<b>\$26,099</b>



	<u>Revenue Reported In Current Year</u>	<u>Current Year Tax Accrual</u>	<u>Prior Year Tax Accrual</u>	<u>Taxes Collected In Current Year</u>
<b><u>Revenue from Local Sources</u></b>				
6111 Current Real Estate Taxes	11,199,528.00			11,199,528.00
6113 Public Utility Realty Taxes	11,991.00			11,991.00
6153 Current Act 511 Real Estate Transfer Taxes	168,057.00	20,385.00	16,705.00	164,377.00
6411 Delinquent Real Estate Taxes	606,819.00	67,268.00	94,750.00	634,301.00
6500 Earnings on Investments	40,834.00			
6700 Revenues from LEA Activities	2,411.00			
6832 Federal IDEA Revenue Received as Pass Through	215,197.00			
6910 Rentals	4,331.00			
6999 Other Revenues Not Specified Above	101,454.00			
<b>TOTAL Revenue from Local Sources</b>	<b>\$12,350,622.00</b>	<b>\$87,653.00</b>	<b>\$111,455.00</b>	<b>\$12,010,197.00</b>

**Revenue Reported  
In Current Year**

**Revenue from State Sources**

7110 Basic Education Funding	3,119,828.00		
7271 Special Education funds for School-Aged Pupils	710,112.00		
7292 Pre-K Counts	472,500.00		
7311 Pupil Transportation Subsidy	40,778.00		
7320 Rental and Sinking Fund Payments / Building Reimbursement Subsidy	19,823.00		
7330 Health Services (Medical, Dental, Nurse, Act 25)	21,458.00		
7340 State Property Tax Reduction Allocation	386,693.00		
7505 Ready to Learn Block Grant	119,607.00		
7599 Other State Revenue Not Listed Elsewhere in the 7000 Series	1,000,000.00		
7810 State Share of Social Security and Medicare Taxes	272,244.00		
7820 State Share of Retirement Contributions	1,106,661.00		
<b>TOTAL Revenue from State Sources</b>	<b>\$7,269,704.00</b>		

**Revenue Reported  
In Current Year**

**Revenue from Federal Sources**

8514 NCLB, Title I - Improving the Academic Achievement of the Disadvantaged	178,130.00			
8515 NCLB, Title II - Preparing, Training and Recruiting High Quality Teachers and Principals	44,645.00			
8516 NCLB, Title III - Language Instruction for Limited English Proficient and Immigrant Students	11,545.00			
8517 NCLB, Title IV - 21St Century Schools	598,166.00			
8690 Other Restricted Federal Grants-in-Aid Through the Commonwealth of PA	10,535.00			
8810 School-Based Access Medicaid Reimbursement Program (SBAP) Reimbursements (Access)	33,440.00			
<b>TOTAL Revenue from Federal Sources</b>	<b>\$876,461.00</b>			

**Revenue Reported  
In Current Year**

**Other Financing Sources**

9330 Capital Projects Fund Transfers	567.00			
<b>TOTAL Other Financing Sources</b>	<b>\$567.00</b>			
<b>TOTAL FROM ALL SOURCES</b>	<b>\$20,497,354.00</b>	<b>\$87,653.00</b>	<b>\$111,455.00</b>	<b>\$12,010,197.00</b>

Revenue from Local Sources	12,350,622.00
Revenue from State Sources	7,269,704.00
Revenue from Federal Sources	876,461.00
Other Financing Sources	567.00
<b>TOTAL FROM ALL SOURCES</b>	<b>\$20,497,354.00</b>

**General Fund (10)**

	<u>Total</u>
<b>1000 Instruction</b>	
<b>100 Personnel Services – Salaries</b>	
100 Personnel Services – Salaries	5,836,725.00
<b>Total Personnel Services – Salaries</b>	<b>\$5,836,725.00</b>
<b>200 Personnel Services – Employee Benefits</b>	
210 Group Insurance – Contracted Provider	266.00
220 Social Security Contributions	448,362.00
230 PSERS Retirement Contributions	1,676,059.00
250 Unemployment Compensation	970.00
260 Workers’ Compensation	54,462.00
270 Group Insurance – Self-Insurance	936,997.00
299 All Other Employee Benefits	26,052.00
<b>Total Personnel Services – Employee Benefits</b>	<b>\$3,143,168.00</b>
<b>300 Purchased Professional and Technical Services</b>	
310 Official / Administrative Services	133,442.00
322 Professional Educational Services – Ius	2,114,036.00
329 Professional Educational Services – Other	142,787.00
330 Other Professional Services	7,389.00
340 Technical Services	4,045.00
<b>Total Purchased Professional and Technical Services</b>	<b>\$2,401,699.00</b>
<b>400 Purchased Property Services</b>	
440 Rentals	23,104.00
<b>Total Purchased Property Services</b>	<b>\$23,104.00</b>
<b>500 Other Purchased Services</b>	
510 Student Transportation Services	408.00
530 Communications	6,000.00
561 Tuition To Other School Districts Within the State	708,294.00
562 Tuition To Pennsylvania Charter Schools	713,120.00
564 Tuition To Career and Technology Centers	631,518.00
567 Tuition To Approved Private Schools (APS) and PA Chartered Schools for the Deaf and Blind	38,680.00
568 Tuition To Private Residential Rehabilitative Institutions (PRRI) [In-State] and Detention Centers	55,365.00
580 Travel	5,894.00
599 Other Miscellaneous Purchased Services	8,920.00
<b>Total Other Purchased Services</b>	<b>\$2,168,199.00</b>
<b>600 Supplies</b>	
610 General Supplies	222,722.00
620 Energy	(4,379.00)
640 Books and Periodicals	60,938.00
<b>Total Supplies</b>	<b>\$279,281.00</b>
<b>700 Property</b>	
752 Capital Equipment – Original and Additional	384.00
762 Capitalized Equipment - Replacement	135.00

General Fund (10)

1000 Instruction	<u>Total</u>
Total Property	\$519.00
Total 1000 Instruction	\$13,852,695.00

**General Fund (10)**

	<u>Elementary</u>	<u>Secondary</u>	<u>Federal</u>	<u>Total</u>
<b>1100 Regular Programs – Elementary / Secondary</b>				
<b>100 Personnel Services – Salaries</b>				
100 Personnel Services – Salaries	1,341,101.00	2,215,571.00	508,713.00	4,065,385.00
<b>Total Personnel Services – Salaries</b>	<b>\$1,341,101.00</b>	<b>\$2,215,571.00</b>	<b>\$508,713.00</b>	<b>\$4,065,385.00</b>
<b>200 Personnel Services – Employee Benefits</b>				
220 Social Security Contributions	99,541.00	165,422.00	48,175.00	313,138.00
230 PSERS Retirement Contributions	402,242.00	672,911.00	58,789.00	1,133,942.00
250 Unemployment Compensation	970.00			970.00
260 Workers' Compensation	14,256.00	23,211.00	2,123.00	39,590.00
270 Group Insurance – Self-Insurance	293,280.00	356,850.00	43,696.00	693,826.00
299 All Other Employee Benefits	14,509.00	9,812.00		24,321.00
<b>Total Personnel Services – Employee Benefits</b>	<b>\$824,798.00</b>	<b>\$1,228,206.00</b>	<b>\$152,783.00</b>	<b>\$2,205,787.00</b>
<b>300 Purchased Professional and Technical Services</b>				
310 Official / Administrative Services	51,267.00	82,175.00		133,442.00
329 Professional Educational Services – Other		10,600.00	119,353.00	129,953.00
330 Other Professional Services			7,389.00	7,389.00
<b>Total Purchased Professional and Technical Services</b>	<b>\$51,267.00</b>	<b>\$92,775.00</b>	<b>\$126,742.00</b>	<b>\$270,784.00</b>
<b>400 Purchased Property Services</b>				
440 Rentals	11,518.00	11,586.00		23,104.00
<b>Total Purchased Property Services</b>	<b>\$11,518.00</b>	<b>\$11,586.00</b>		<b>\$23,104.00</b>
<b>500 Other Purchased Services</b>				
530 Communications		6,000.00		6,000.00
562 Tuition To Pennsylvania Charter Schools	162,940.00	215,324.00		378,264.00
580 Travel		5,454.00		5,454.00
599 Other Miscellaneous Purchased Services			8,920.00	8,920.00
<b>Total Other Purchased Services</b>	<b>\$162,940.00</b>	<b>\$226,778.00</b>	<b>\$8,920.00</b>	<b>\$398,638.00</b>
<b>600 Supplies</b>				
610 General Supplies	25,780.00	102,204.00	44,936.00	172,920.00
640 Books and Periodicals	18,119.00	38,046.00	882.00	57,047.00
<b>Total Supplies</b>	<b>\$43,899.00</b>	<b>\$140,250.00</b>	<b>\$45,818.00</b>	<b>\$229,967.00</b>
<b>Total 1100 Regular Programs – Elementary / Secondary</b>	<b>\$2,435,523.00</b>	<b>\$3,915,166.00</b>	<b>\$842,976.00</b>	<b>\$7,193,665.00</b>



**General Fund (10)**

	<u>Elementary</u>	<u>Secondary</u>	<u>Federal</u>	<u>Total</u>
<b>1110 Regular Programs</b>				
<b>100 Personnel Services – Salaries</b>				
100 Personnel Services – Salaries	1,341,101.00	2,215,571.00		3,556,672.00
<b>Total Personnel Services – Salaries</b>	<b>\$1,341,101.00</b>	<b>\$2,215,571.00</b>		<b>\$3,556,672.00</b>
<b>200 Personnel Services – Employee Benefits</b>				
220 Social Security Contributions	99,541.00	165,422.00		264,963.00
230 PSERS Retirement Contributions	402,242.00	672,911.00		1,075,153.00
250 Unemployment Compensation	970.00			970.00
260 Workers' Compensation	14,256.00	23,211.00		37,467.00
270 Group Insurance – Self-Insurance	293,280.00	356,850.00		650,130.00
299 All Other Employee Benefits	14,509.00	9,812.00		24,321.00
<b>Total Personnel Services – Employee Benefits</b>	<b>\$824,798.00</b>	<b>\$1,228,206.00</b>		<b>\$2,053,004.00</b>
<b>300 Purchased Professional and Technical Services</b>				
310 Official / Administrative Services	51,267.00	82,175.00		133,442.00
329 Professional Educational Services – Other		10,600.00		10,600.00
<b>Total Purchased Professional and Technical Services</b>	<b>\$51,267.00</b>	<b>\$92,775.00</b>		<b>\$144,042.00</b>
<b>400 Purchased Property Services</b>				
440 Rentals	11,518.00	11,586.00		23,104.00
<b>Total Purchased Property Services</b>	<b>\$11,518.00</b>	<b>\$11,586.00</b>		<b>\$23,104.00</b>
<b>500 Other Purchased Services</b>				
530 Communications		6,000.00		6,000.00
562 Tuition To Pennsylvania Charter Schools	162,940.00	215,324.00		378,264.00
580 Travel		5,454.00		5,454.00
<b>Total Other Purchased Services</b>	<b>\$162,940.00</b>	<b>\$226,778.00</b>		<b>\$389,718.00</b>
<b>600 Supplies</b>				
610 General Supplies	25,780.00	102,204.00		127,984.00
640 Books and Periodicals	18,119.00	38,046.00		56,165.00
<b>Total Supplies</b>	<b>\$43,899.00</b>	<b>\$140,250.00</b>		<b>\$184,149.00</b>
<b>Total 1110 Regular Programs</b>	<b>\$2,435,523.00</b>	<b>\$3,915,166.00</b>		<b>\$6,350,689.00</b>

**General Fund (10)**

**1190 Federally-Funded Regular Programs**

	<u>Elementary</u>	<u>Secondary</u>	<u>Federal</u>	<u>Total</u>
<b>100 Personnel Services – Salaries</b>				
100 Personnel Services – Salaries			508,713.00	508,713.00
<b>Total Personnel Services – Salaries</b>			<b>\$508,713.00</b>	<b>\$508,713.00</b>
<b>200 Personnel Services – Employee Benefits</b>				
220 Social Security Contributions			48,175.00	48,175.00
230 PSERS Retirement Contributions			58,789.00	58,789.00
260 Workers’ Compensation			2,123.00	2,123.00
270 Group Insurance – Self-Insurance			43,696.00	43,696.00
<b>Total Personnel Services – Employee Benefits</b>			<b>\$152,783.00</b>	<b>\$152,783.00</b>
<b>300 Purchased Professional and Technical Services</b>				
329 Professional Educational Services – Other			119,353.00	119,353.00
330 Other Professional Services			7,389.00	7,389.00
<b>Total Purchased Professional and Technical Services</b>			<b>\$126,742.00</b>	<b>\$126,742.00</b>
<b>500 Other Purchased Services</b>				
599 Other Miscellaneous Purchased Services			8,920.00	8,920.00
<b>Total Other Purchased Services</b>			<b>\$8,920.00</b>	<b>\$8,920.00</b>
<b>600 Supplies</b>				
610 General Supplies			44,936.00	44,936.00
640 Books and Periodicals			882.00	882.00
<b>Total Supplies</b>			<b>\$45,818.00</b>	<b>\$45,818.00</b>
<b>Total 1190 Federally-Funded Regular Programs</b>			<b>\$842,976.00</b>	<b>\$842,976.00</b>

**General Fund (10)**

<b>1200 Special Programs – Elementary / Secondary</b>	<u>Elementary</u>	<u>Secondary</u>	<u>Federal</u>	<u>Total</u>
<b>100 Personnel Services – Salaries</b>				
100 Personnel Services – Salaries	683,148.00	896,955.00		1,580,103.00
<b>Total Personnel Services – Salaries</b>	<b>\$683,148.00</b>	<b>\$896,955.00</b>		<b>\$1,580,103.00</b>
<b>200 Personnel Services – Employee Benefits</b>				
220 Social Security Contributions	52,760.00	68,327.00		121,087.00
230 PSERS Retirement Contributions	208,097.00	276,612.00		484,709.00
260 Workers’ Compensation	3,322.00	9,422.00		12,744.00
270 Group Insurance – Self-Insurance	55,091.00	162,504.00		217,595.00
299 All Other Employee Benefits		1,731.00		1,731.00
<b>Total Personnel Services – Employee Benefits</b>	<b>\$319,270.00</b>	<b>\$518,596.00</b>		<b>\$837,866.00</b>
<b>300 Purchased Professional and Technical Services</b>				
322 Professional Educational Services – lus	1,089,061.00	596,770.00	108,669.00	1,794,500.00
329 Professional Educational Services – Other	6,310.00	6,524.00		12,834.00
340 Technical Services		4,045.00		4,045.00
<b>Total Purchased Professional and Technical Services</b>	<b>\$1,095,371.00</b>	<b>\$607,339.00</b>	<b>\$108,669.00</b>	<b>\$1,811,379.00</b>
<b>500 Other Purchased Services</b>				
561 Tuition To Other School Districts Within the State	62,772.00	645,522.00		708,294.00
562 Tuition To Pennsylvania Charter Schools		334,856.00		334,856.00
567 Tuition To Approved Private Schools (APS) and PA Chartered Schools for the Deaf and Blind		38,680.00		38,680.00
568 Tuition To Private Residential Rehabilitative Institutions (PRRI) [In-State] and Detention Centers	6,810.00	48,555.00		55,365.00
580 Travel	45.00			45.00
<b>Total Other Purchased Services</b>	<b>\$69,627.00</b>	<b>\$1,067,613.00</b>		<b>\$1,137,240.00</b>
<b>600 Supplies</b>				
610 General Supplies	1,965.00	46,659.00		48,624.00
640 Books and Periodicals	1,469.00	1,459.00		2,928.00
<b>Total Supplies</b>	<b>\$3,434.00</b>	<b>\$48,118.00</b>		<b>\$51,552.00</b>
<b>700 Property</b>				
752 Capital Equipment – Original and Additional		384.00		384.00
762 Capitalized Equipment - Replacement	135.00			135.00
<b>Total Property</b>	<b>\$135.00</b>	<b>\$384.00</b>		<b>\$519.00</b>
<b>Total 1200 Special Programs – Elementary / Secondary</b>	<b>\$2,170,985.00</b>	<b>\$3,139,005.00</b>	<b>\$108,669.00</b>	<b>\$5,418,659.00</b>

**General Fund (10)**

**1210 Life Skills Support**

	<u>Elementary</u>	<u>Secondary</u>	<u>Federal</u>	<u>Total</u>
<b>100 Personnel Services – Salaries</b>				
100 Personnel Services – Salaries		112,546.00		112,546.00
<b>Total Personnel Services – Salaries</b>		<b>\$112,546.00</b>		<b>\$112,546.00</b>
<b>200 Personnel Services – Employee Benefits</b>				
220 Social Security Contributions		8,676.00		8,676.00
230 PSERS Retirement Contributions		40,012.00		40,012.00
260 Workers’ Compensation		1,084.00		1,084.00
270 Group Insurance – Self-Insurance		17,251.00		17,251.00
<b>Total Personnel Services – Employee Benefits</b>		<b>\$67,023.00</b>		<b>\$67,023.00</b>
<b>300 Purchased Professional and Technical Services</b>				
322 Professional Educational Services – Ius		4,427.00		4,427.00
<b>Total Purchased Professional and Technical Services</b>		<b>\$4,427.00</b>		<b>\$4,427.00</b>
<b>500 Other Purchased Services</b>				
561 Tuition To Other School Districts Within the State		537,150.00		537,150.00
<b>Total Other Purchased Services</b>		<b>\$537,150.00</b>		<b>\$537,150.00</b>
<b>600 Supplies</b>				
610 General Supplies		495.00		495.00
<b>Total Supplies</b>		<b>\$495.00</b>		<b>\$495.00</b>
<b>Total 1210 Life Skills Support</b>		<b>\$721,641.00</b>		<b>\$721,641.00</b>

LEA : 122097203 Morrisville Borough SD

Printed 4/27/2018 3:41:32 PM

General Fund (10)

1220 Sensory Support

	<u>Elementary</u>	<u>Secondary</u>	<u>Federal</u>	<u>Total</u>
<b>300 <u>Purchased Professional and Technical Services</u></b>				
322 Professional Educational Services – lus	832,490.00	26,040.00		858,530.00
<b>Total Purchased Professional and Technical Services</b>	<b>\$832,490.00</b>	<b>\$26,040.00</b>		<b>\$858,530.00</b>
<b>Total 1220 Sensory Support</b>	<b>\$832,490.00</b>	<b>\$26,040.00</b>		<b>\$858,530.00</b>

**General Fund (10)**

	<u>Elementary</u>	<u>Secondary</u>	<u>Federal</u>	<u>Total</u>
<b>1230 Emotional Support</b>				
<b>100 Personnel Services – Salaries</b>				
100 Personnel Services – Salaries	242,081.00	161,272.00		403,353.00
<b>Total Personnel Services – Salaries</b>	<b>\$242,081.00</b>	<b>\$161,272.00</b>		<b>\$403,353.00</b>
<b>200 Personnel Services – Employee Benefits</b>				
220 Social Security Contributions	17,749.00	12,449.00		30,198.00
230 PSERS Retirement Contributions	72,697.00	49,579.00		122,276.00
260 Workers’ Compensation		1,107.00		1,107.00
270 Group Insurance – Self-Insurance	1,554.00	87,320.00		88,874.00
<b>Total Personnel Services – Employee Benefits</b>	<b>\$92,000.00</b>	<b>\$150,455.00</b>		<b>\$242,455.00</b>
<b>300 Purchased Professional and Technical Services</b>				
322 Professional Educational Services – Ius	214,392.00	434,960.00		649,352.00
<b>Total Purchased Professional and Technical Services</b>	<b>\$214,392.00</b>	<b>\$434,960.00</b>		<b>\$649,352.00</b>
<b>500 Other Purchased Services</b>				
561 Tuition To Other School Districts Within the State		108,372.00		108,372.00
562 Tuition To Pennsylvania Charter Schools		334,856.00		334,856.00
<b>Total Other Purchased Services</b>		<b>\$443,228.00</b>		<b>\$443,228.00</b>
<b>Total 1230 Emotional Support</b>	<b>\$548,473.00</b>	<b>\$1,189,915.00</b>		<b>\$1,738,388.00</b>

**General Fund (10)**

**1240 Academic Support**

	<u>Elementary</u>	<u>Secondary</u>	<u>Federal</u>	<u>Total</u>
<b>100 Personnel Services – Salaries</b>				
100 Personnel Services – Salaries	441,067.00	446,732.00		887,799.00
<b>Total Personnel Services – Salaries</b>	<b>\$441,067.00</b>	<b>\$446,732.00</b>		<b>\$887,799.00</b>
<b>200 Personnel Services – Employee Benefits</b>				
220 Social Security Contributions	35,011.00	33,459.00		68,470.00
230 PSERS Retirement Contributions	135,400.00	134,035.00		269,435.00
260 Workers’ Compensation	3,322.00	5,817.00		9,139.00
270 Group Insurance – Self-Insurance	53,537.00	44,221.00		97,758.00
299 All Other Employee Benefits		1,731.00		1,731.00
<b>Total Personnel Services – Employee Benefits</b>	<b>\$227,270.00</b>	<b>\$219,263.00</b>		<b>\$446,533.00</b>
<b>300 Purchased Professional and Technical Services</b>				
322 Professional Educational Services – lus			108,669.00	108,669.00
329 Professional Educational Services – Other	6,310.00	6,524.00		12,834.00
<b>Total Purchased Professional and Technical Services</b>	<b>\$6,310.00</b>	<b>\$6,524.00</b>	<b>\$108,669.00</b>	<b>\$121,503.00</b>
<b>500 Other Purchased Services</b>				
561 Tuition To Other School Districts Within the State	62,772.00			62,772.00
580 Travel	45.00			45.00
<b>Total Other Purchased Services</b>	<b>\$62,817.00</b>			<b>\$62,817.00</b>
<b>600 Supplies</b>				
610 General Supplies	1,965.00	147.00		2,112.00
640 Books and Periodicals	1,469.00	1,459.00		2,928.00
<b>Total Supplies</b>	<b>\$3,434.00</b>	<b>\$1,606.00</b>		<b>\$5,040.00</b>
<b>700 Property</b>				
752 Capital Equipment – Original and Additional		384.00		384.00
762 Capitalized Equipment - Replacement	135.00			135.00
<b>Total Property</b>	<b>\$135.00</b>	<b>\$384.00</b>		<b>\$519.00</b>
<b>Total 1240 Academic Support</b>	<b>\$741,033.00</b>	<b>\$674,509.00</b>	<b>\$108,669.00</b>	<b>\$1,524,211.00</b>

**General Fund (10)**

	<u>Elementary</u>	<u>Secondary</u>	<u>Federal</u>	<u>Total</u>
<b>1241 Learning Support – Public</b>				
<b>100 Personnel Services – Salaries</b>				
100 Personnel Services – Salaries	420,799.00	435,036.00		855,835.00
<b>Total Personnel Services – Salaries</b>	<b>\$420,799.00</b>	<b>\$435,036.00</b>		<b>\$855,835.00</b>
<b>200 Personnel Services – Employee Benefits</b>				
220 Social Security Contributions	33,504.00	32,581.00		66,085.00
230 PSERS Retirement Contributions	129,314.00	130,523.00		259,837.00
260 Workers’ Compensation	3,322.00	5,817.00		9,139.00
270 Group Insurance – Self-Insurance	49,874.00	43,637.00		93,511.00
299 All Other Employee Benefits		1,731.00		1,731.00
<b>Total Personnel Services – Employee Benefits</b>	<b>\$216,014.00</b>	<b>\$214,289.00</b>		<b>\$430,303.00</b>
<b>300 Purchased Professional and Technical Services</b>				
322 Professional Educational Services – lus			108,669.00	108,669.00
329 Professional Educational Services – Other	6,310.00	6,524.00		12,834.00
<b>Total Purchased Professional and Technical Services</b>	<b>\$6,310.00</b>	<b>\$6,524.00</b>	<b>\$108,669.00</b>	<b>\$121,503.00</b>
<b>500 Other Purchased Services</b>				
561 Tuition To Other School Districts Within the State	62,772.00			62,772.00
<b>Total Other Purchased Services</b>	<b>\$62,772.00</b>			<b>\$62,772.00</b>
<b>600 Supplies</b>				
610 General Supplies	1,885.00	147.00		2,032.00
640 Books and Periodicals	1,469.00	1,363.00		2,832.00
<b>Total Supplies</b>	<b>\$3,354.00</b>	<b>\$1,510.00</b>		<b>\$4,864.00</b>
<b>700 Property</b>				
752 Capital Equipment – Original and Additional		384.00		384.00
762 Capitalized Equipment - Replacement	135.00			135.00
<b>Total Property</b>	<b>\$135.00</b>	<b>\$384.00</b>		<b>\$519.00</b>
<b>Total 1241 Learning Support – Public</b>	<b>\$709,384.00</b>	<b>\$657,743.00</b>	<b>\$108,669.00</b>	<b>\$1,475,796.00</b>



**General Fund (10)**

**1243 Gifted Support**

	<u>Elementary</u>	<u>Secondary</u>	<u>Federal</u>	<u>Total</u>
<b>100 <u>Personnel Services – Salaries</u></b>				
100 Personnel Services – Salaries	20,268.00	11,696.00		31,964.00
<b>Total Personnel Services – Salaries</b>	<b>\$20,268.00</b>	<b>\$11,696.00</b>		<b>\$31,964.00</b>
<b>200 <u>Personnel Services – Employee Benefits</u></b>				
220 Social Security Contributions	1,507.00	878.00		2,385.00
230 PSERS Retirement Contributions	6,086.00	3,512.00		9,598.00
270 Group Insurance – Self-Insurance	3,663.00	584.00		4,247.00
<b>Total Personnel Services – Employee Benefits</b>	<b>\$11,256.00</b>	<b>\$4,974.00</b>		<b>\$16,230.00</b>
<b>500 <u>Other Purchased Services</u></b>				
580 Travel	45.00			45.00
<b>Total Other Purchased Services</b>	<b>\$45.00</b>			<b>\$45.00</b>
<b>600 <u>Supplies</u></b>				
610 General Supplies	80.00			80.00
640 Books and Periodicals		96.00		96.00
<b>Total Supplies</b>	<b>\$80.00</b>	<b>\$96.00</b>		<b>\$176.00</b>
<b>Total 1243 Gifted Support</b>	<b>\$31,649.00</b>	<b>\$16,766.00</b>		<b>\$48,415.00</b>

General Fund (10)

1270 Multi-Handicapped Support

300 Purchased Professional and Technical Services

322 Professional Educational Services – lus

**Total Purchased Professional and Technical Services**

**Total 1270 Multi-Handicapped Support**

Elementary

Secondary

Federal

Total

125,550.00

125,550.00

**\$125,550.00**

**\$125,550.00**

**\$125,550.00**

**\$125,550.00**

**General Fund (10)**

	<u>Elementary</u>	<u>Secondary</u>	<u>Federal</u>	<u>Total</u>
<b>1290 Special Programs - Other Support</b>				
<b>100 Personnel Services – Salaries</b>				
100 Personnel Services – Salaries		176,405.00		176,405.00
<b>Total Personnel Services – Salaries</b>		<b>\$176,405.00</b>		<b>\$176,405.00</b>
<b>200 Personnel Services – Employee Benefits</b>				
220 Social Security Contributions		13,743.00		13,743.00
230 PSERS Retirement Contributions		52,986.00		52,986.00
260 Workers’ Compensation		1,414.00		1,414.00
270 Group Insurance – Self-Insurance		13,712.00		13,712.00
<b>Total Personnel Services – Employee Benefits</b>		<b>\$81,855.00</b>		<b>\$81,855.00</b>
<b>300 Purchased Professional and Technical Services</b>				
322 Professional Educational Services – Ius	42,179.00	5,793.00		47,972.00
340 Technical Services		4,045.00		4,045.00
<b>Total Purchased Professional and Technical Services</b>	<b>\$42,179.00</b>	<b>\$9,838.00</b>		<b>\$52,017.00</b>
<b>500 Other Purchased Services</b>				
567 Tuition To Approved Private Schools (APS) and PA Chartered Schools for the Deaf and Blind		38,680.00		38,680.00
568 Tuition To Private Residential Rehabilitative Institutions (PRRI) [In-State] and Detention Centers	6,810.00	48,555.00		55,365.00
<b>Total Other Purchased Services</b>	<b>\$6,810.00</b>	<b>\$87,235.00</b>		<b>\$94,045.00</b>
<b>600 Supplies</b>				
610 General Supplies		46,017.00		46,017.00
<b>Total Supplies</b>		<b>\$46,017.00</b>		<b>\$46,017.00</b>
<b>Total 1290 Special Programs - Other Support</b>	<b>\$48,989.00</b>	<b>\$401,350.00</b>		<b>\$450,339.00</b>

**General Fund (10)**

**1300 Vocational Education**

**100 Personnel Services – Salaries**

	<u>Elementary</u>	<u>Secondary</u>	<u>Federal</u>	<u>Total</u>
100 Personnel Services – Salaries		93,010.00		93,010.00

<b>Total Personnel Services – Salaries</b>		<b>\$93,010.00</b>		<b>\$93,010.00</b>
--	--	--------------------	--	--------------------

**200 Personnel Services – Employee Benefits**

220 Social Security Contributions		6,879.00		6,879.00
-----------------------------------	--	----------	--	----------

230 PSERS Retirement Contributions		27,893.00		27,893.00
------------------------------------	--	-----------	--	-----------

260 Workers’ Compensation		1,226.00		1,226.00
---------------------------	--	----------	--	----------

270 Group Insurance – Self-Insurance		7,960.00		7,960.00
--------------------------------------	--	----------	--	----------

<b>Total Personnel Services – Employee Benefits</b>		<b>\$43,958.00</b>		<b>\$43,958.00</b>
---	--	--------------------	--	--------------------

**500 Other Purchased Services**

564 Tuition To Career and Technology Centers		631,518.00		631,518.00
--	--	------------	--	------------

580 Travel		395.00		395.00
------------	--	--------	--	--------

<b>Total Other Purchased Services</b>		<b>\$631,913.00</b>		<b>\$631,913.00</b>
---------------------------------------	--	---------------------	--	---------------------

**600 Supplies**

640 Books and Periodicals		963.00		963.00
---------------------------	--	--------	--	--------

<b>Total Supplies</b>		<b>\$963.00</b>		<b>\$963.00</b>
-----------------------	--	-----------------	--	-----------------

<b>Total 1300 Vocational Education</b>		<b>\$769,844.00</b>		<b>\$769,844.00</b>
--	--	---------------------	--	---------------------

General Fund (10)

	<u>Elementary</u>	<u>Secondary</u>	<u>Federal</u>	<u>Total</u>
<b>1400 Other Instructional Programs – Elementary / Secondary</b>				
<b>100 Personnel Services – Salaries</b>				
100 Personnel Services – Salaries	363.00	3,036.00		3,399.00
<b>Total Personnel Services – Salaries</b>	<b>\$363.00</b>	<b>\$3,036.00</b>		<b>\$3,399.00</b>
<b>200 Personnel Services – Employee Benefits</b>				
210 Group Insurance – Contracted Provider	27.00	239.00		266.00
230 PSERS Retirement Contributions	109.00	929.00		1,038.00
<b>Total Personnel Services – Employee Benefits</b>	<b>\$136.00</b>	<b>\$1,168.00</b>		<b>\$1,304.00</b>
<b>Total 1400 Other Instructional Programs – Elementary / Secondary</b>	<b>\$499.00</b>	<b>\$4,204.00</b>		<b>\$4,703.00</b>

General Fund (10)

1430 Homebound Instruction

100 Personnel Services – Salaries

	<u>Elementary</u>	<u>Secondary</u>	<u>Federal</u>	<u>Total</u>
100 Personnel Services – Salaries	363.00	3,036.00		3,399.00
<b>Total Personnel Services – Salaries</b>	<b>\$363.00</b>	<b>\$3,036.00</b>		<b>\$3,399.00</b>

200 Personnel Services – Employee Benefits

210 Group Insurance – Contracted Provider	27.00	239.00		266.00
230 PSERS Retirement Contributions	109.00	929.00		1,038.00

<b>Total Personnel Services – Employee Benefits</b>	<b>\$136.00</b>	<b>\$1,168.00</b>		<b>\$1,304.00</b>
<b>Total 1430 Homebound Instruction</b>	<b>\$499.00</b>	<b>\$4,204.00</b>		<b>\$4,703.00</b>

**General Fund (10)**

	<u>Elementary</u>	<u>Secondary</u>	<u>Federal</u>	<u>Total</u>
<b>1800 Pre-Kindergarten</b>				
<b>100 Personnel Services – Salaries</b>				
100 Personnel Services – Salaries				94,828.00
<b>Total Personnel Services – Salaries</b>				<b>\$94,828.00</b>
<b>200 Personnel Services – Employee Benefits</b>				
220 Social Security Contributions				7,258.00
230 PSERS Retirement Contributions				28,477.00
260 Workers’ Compensation				902.00
270 Group Insurance – Self-Insurance				17,616.00
<b>Total Personnel Services – Employee Benefits</b>				<b>\$54,253.00</b>
<b>300 Purchased Professional and Technical Services</b>				
322 Professional Educational Services – Ius				319,536.00
<b>Total Purchased Professional and Technical Services</b>				<b>\$319,536.00</b>
<b>500 Other Purchased Services</b>				
510 Student Transportation Services				408.00
<b>Total Other Purchased Services</b>				<b>\$408.00</b>
<b>600 Supplies</b>				
610 General Supplies				1,178.00
620 Energy				(4,379.00)
<b>Total Supplies</b>				<b>(\$3,201.00)</b>
<b>Total 1800 Pre-Kindergarten</b>				<b>\$465,824.00</b>

**General Fund (10)**

**1801 Pre-K Instruction**

Elementary

Secondary

Federal

Total

**100 Personnel Services – Salaries**

100 Personnel Services – Salaries

94,828.00

**Total Personnel Services – Salaries**

**\$94,828.00**

**200 Personnel Services – Employee Benefits**

220 Social Security Contributions

7,258.00

230 PSERS Retirement Contributions

28,477.00

260 Workers’ Compensation

902.00

270 Group Insurance – Self-Insurance

17,616.00

**Total Personnel Services – Employee Benefits**

**\$54,253.00**

**300 Purchased Professional and Technical Services**

322 Professional Educational Services – Ius

319,536.00

**Total Purchased Professional and Technical Services**

**\$319,536.00**

**600 Supplies**

610 General Supplies

1,178.00

620 Energy

(4,379.00)

**Total Supplies**

**(\$3,201.00)**

**Total 1801 Pre-K Instruction**

**\$465,416.00**



General Fund (10)

1804 Pre-K Student Transportation

Elementary

Secondary

Federal

Total

500 Other Purchased Services

510 Student Transportation Services

408.00

**Total Other Purchased Services**

**\$408.00**

**Total 1804 Pre-K Student Transportation**

**\$408.00**

**General Fund (10)**

**2000 Support Services**

**Total**

**100 Personnel Services – Salaries**

100 Personnel Services – Salaries 1,755,432.00

**Total Personnel Services – Salaries \$1,755,432.00**

**200 Personnel Services – Employee Benefits**

210 Group Insurance – Contracted Provider 12,991.00

220 Social Security Contributions 154,447.00

230 PSERS Retirement Contributions 490,246.00

260 Workers’ Compensation 14,912.00

270 Group Insurance – Self-Insurance 387,365.00

299 All Other Employee Benefits 3,956.00

**Total Personnel Services – Employee Benefits \$1,063,917.00**

**300 Purchased Professional and Technical Services**

310 Official / Administrative Services 143,656.00

322 Professional Educational Services – lus 126,668.00

323 Professional Educational Services – Other Educational Agencies 16,963.00

329 Professional Educational Services – Other 31,221.00

330 Other Professional Services 33,078.00

340 Technical Services 133,746.00

390 Other Purchased Professional and Technical Services 29,846.00

**Total Purchased Professional and Technical Services \$515,178.00**

**400 Purchased Property Services**

410 Cleaning Services 85,573.00

420 Utility Services 135,884.00

430 Repairs and Maintenance Services 136,277.00

440 Rentals 12,927.00

460 Extermination Services 1,145.00

**Total Purchased Property Services \$371,806.00**

**500 Other Purchased Services**

513 Contracted Carriers 91,299.00

516 Student Transportation Services From the IU 256,125.00

520 Insurance – General 18,061.00

523 General Property and Liability Insurance 93,504.00

530 Communications 46,413.00

550 Printing and Binding 9,096.00

580 Travel 3,320.00

595 IU Payments By Withholding 4,565.00

599 Other Miscellaneous Purchased Services 45,680.00

**Total Other Purchased Services \$568,063.00**

**600 Supplies**

610 General Supplies 93,008.00

620 Energy 82,686.00

630 Food 1,070.00

640 Books and Periodicals 115,600.00

**General Fund (10)**

**2000 Support Services**

<b>Total Supplies</b>	<b><u>Total</u></b>
	<b>\$292,364.00</b>

**700 Property**

752 Capital Equipment – Original and Additional	107,360.00
---	------------

762 Capitalized Equipment - Replacement	17,348.00
---	-----------

<b>Total Property</b>	<b>\$124,708.00</b>
-----------------------	---------------------

**800 Other Objects**

810 Dues and Fees	36,936.00
-------------------	-----------

<b>Total Other Objects</b>	<b>\$36,936.00</b>
----------------------------	--------------------

<b>Total 2000 Support Services</b>	<b>\$4,728,404.00</b>
------------------------------------	-----------------------

**General Fund (10)**

	<u>Elementary</u>	<u>Secondary</u>	<u>Federal</u>	<u>Total</u>
<b>2100 Support Services – Students</b>				
<b>100 Personnel Services – Salaries</b>				
100 Personnel Services – Salaries	167,284.00	125,885.00		341,468.00
<b>Total Personnel Services – Salaries</b>	<b>\$167,284.00</b>	<b>\$125,885.00</b>		<b>\$341,468.00</b>
<b>200 Personnel Services – Employee Benefits</b>				
210 Group Insurance – Contracted Provider	1,470.00	2,930.00		8,030.00
220 Social Security Contributions	12,506.00	10,093.00		37,103.00
230 PSERS Retirement Contributions	49,997.00	37,560.00		87,557.00
260 Workers' Compensation	1,499.00	969.00		2,975.00
270 Group Insurance – Self-Insurance	25,251.00	9,832.00		55,805.00
299 All Other Employee Benefits	748.00			748.00
<b>Total Personnel Services – Employee Benefits</b>	<b>\$91,471.00</b>	<b>\$61,384.00</b>		<b>\$192,218.00</b>
<b>300 Purchased Professional and Technical Services</b>				
322 Professional Educational Services – Ius	96,864.00	14,880.00		111,744.00
329 Professional Educational Services – Other			31,221.00	31,221.00
330 Other Professional Services	2,658.00			2,658.00
390 Other Purchased Professional and Technical Services		5,350.00		5,350.00
<b>Total Purchased Professional and Technical Services</b>	<b>\$99,522.00</b>	<b>\$20,230.00</b>	<b>\$31,221.00</b>	<b>\$150,973.00</b>
<b>500 Other Purchased Services</b>				
550 Printing and Binding	596.00	7,651.00		9,096.00
580 Travel				155.00
599 Other Miscellaneous Purchased Services			735.00	735.00
<b>Total Other Purchased Services</b>	<b>\$596.00</b>	<b>\$7,651.00</b>	<b>\$735.00</b>	<b>\$9,986.00</b>
<b>600 Supplies</b>				
610 General Supplies	3,735.00	2,475.00		6,274.00
640 Books and Periodicals		29,588.00		29,588.00
<b>Total Supplies</b>	<b>\$3,735.00</b>	<b>\$32,063.00</b>		<b>\$35,862.00</b>
<b>700 Property</b>				
752 Capital Equipment – Original and Additional	100.00	2,098.00		2,198.00
<b>Total Property</b>	<b>\$100.00</b>	<b>\$2,098.00</b>		<b>\$2,198.00</b>
<b>800 Other Objects</b>				
810 Dues and Fees		1,224.00		1,224.00
<b>Total Other Objects</b>		<b>\$1,224.00</b>		<b>\$1,224.00</b>
<b>Total 2100 Support Services – Students</b>	<b>\$362,708.00</b>	<b>\$250,535.00</b>	<b>\$31,956.00</b>	<b>\$733,929.00</b>

**General Fund (10)**

**2110 Supervision of Student Services**

	<u>Elementary</u>	<u>Secondary</u>	<u>Federal</u>	<u>Total</u>
<b>300 <u>Purchased Professional and Technical Services</u></b>				
322 Professional Educational Services – Ius	96,864.00	14,880.00		111,744.00
329 Professional Educational Services – Other			31,221.00	31,221.00
<b>Total Purchased Professional and Technical Services</b>	<b>\$96,864.00</b>	<b>\$14,880.00</b>	<b>\$31,221.00</b>	<b>\$142,965.00</b>
<b>500 <u>Other Purchased Services</u></b>				
550 Printing and Binding	596.00	7,473.00		8,069.00
599 Other Miscellaneous Purchased Services			735.00	735.00
<b>Total Other Purchased Services</b>	<b>\$596.00</b>	<b>\$7,473.00</b>	<b>\$735.00</b>	<b>\$8,804.00</b>
<b>600 <u>Supplies</u></b>				
610 General Supplies	2,551.00	1,286.00		3,837.00
640 Books and Periodicals		29,588.00		29,588.00
<b>Total Supplies</b>	<b>\$2,551.00</b>	<b>\$30,874.00</b>		<b>\$33,425.00</b>
<b>700 <u>Property</u></b>				
752 Capital Equipment – Original and Additional	100.00	2,098.00		2,198.00
<b>Total Property</b>	<b>\$100.00</b>	<b>\$2,098.00</b>		<b>\$2,198.00</b>
<b>800 <u>Other Objects</u></b>				
810 Dues and Fees		225.00		225.00
<b>Total Other Objects</b>		<b>\$225.00</b>		<b>\$225.00</b>
<b>Total 2110 Supervision of Student Services</b>	<b>\$100,111.00</b>	<b>\$55,550.00</b>	<b>\$31,956.00</b>	<b>\$187,617.00</b>

**General Fund (10)**

	<u>Elementary</u>	<u>Secondary</u>	<u>Federal</u>	<u>Total</u>
<b>2111 Supervision of Student Services – Head of Component</b>				
<b>300 <u>Purchased Professional and Technical Services</u></b>				
322 Professional Educational Services – Ius	96,864.00	14,880.00		111,744.00
329 Professional Educational Services – Other			31,221.00	31,221.00
<b>Total Purchased Professional and Technical Services</b>	<b>\$96,864.00</b>	<b>\$14,880.00</b>	<b>\$31,221.00</b>	<b>\$142,965.00</b>
<b>500 <u>Other Purchased Services</u></b>				
550 Printing and Binding	596.00	7,473.00		8,069.00
599 Other Miscellaneous Purchased Services			735.00	735.00
<b>Total Other Purchased Services</b>	<b>\$596.00</b>	<b>\$7,473.00</b>	<b>\$735.00</b>	<b>\$8,804.00</b>
<b>600 <u>Supplies</u></b>				
610 General Supplies	2,551.00	1,286.00		3,837.00
640 Books and Periodicals		29,588.00		29,588.00
<b>Total Supplies</b>	<b>\$2,551.00</b>	<b>\$30,874.00</b>		<b>\$33,425.00</b>
<b>700 <u>Property</u></b>				
752 Capital Equipment – Original and Additional	100.00	2,098.00		2,198.00
<b>Total Property</b>	<b>\$100.00</b>	<b>\$2,098.00</b>		<b>\$2,198.00</b>
<b>800 <u>Other Objects</u></b>				
810 Dues and Fees		225.00		225.00
<b>Total Other Objects</b>		<b>\$225.00</b>		<b>\$225.00</b>
<b>Total 2111 Supervision of Student Services – Head of Component</b>	<b>\$100,111.00</b>	<b>\$55,550.00</b>	<b>\$31,956.00</b>	<b>\$187,617.00</b>

General Fund (10)

2120 Guidance Services

100 Personnel Services – Salaries

	<u>Elementary</u>	<u>Secondary</u>	<u>Federal</u>	<u>Total</u>
100 Personnel Services – Salaries	152,287.00	96,001.00		248,288.00
<b>Total Personnel Services – Salaries</b>	<b>\$152,287.00</b>	<b>\$96,001.00</b>		<b>\$248,288.00</b>

200 Personnel Services – Employee Benefits

220 Social Security Contributions	11,382.00	7,854.00		19,236.00
230 PSERS Retirement Contributions	45,502.00	28,600.00		74,102.00
260 Workers’ Compensation	1,499.00	969.00		2,468.00
270 Group Insurance – Self-Insurance	25,251.00	9,832.00		35,083.00
299 All Other Employee Benefits	748.00			748.00
<b>Total Personnel Services – Employee Benefits</b>	<b>\$84,382.00</b>	<b>\$47,255.00</b>		<b>\$131,637.00</b>

300 Purchased Professional and Technical Services

390 Other Purchased Professional and Technical Services		5,350.00		5,350.00
<b>Total Purchased Professional and Technical Services</b>		<b>\$5,350.00</b>		<b>\$5,350.00</b>

500 Other Purchased Services

550 Printing and Binding		178.00		178.00
<b>Total Other Purchased Services</b>		<b>\$178.00</b>		<b>\$178.00</b>

600 Supplies

610 General Supplies	250.00	1,189.00		1,439.00
<b>Total Supplies</b>	<b>\$250.00</b>	<b>\$1,189.00</b>		<b>\$1,439.00</b>

800 Other Objects

810 Dues and Fees		999.00		999.00
<b>Total Other Objects</b>		<b>\$999.00</b>		<b>\$999.00</b>

Total 2120 Guidance Services

<b>Total 2120 Guidance Services</b>	<b>\$236,919.00</b>	<b>\$150,972.00</b>		<b>\$387,891.00</b>
-------------------------------------	---------------------	---------------------	--	---------------------

**General Fund (10)**

	<u>Elementary</u>	<u>Secondary</u>	<u>Federal</u>	<u>Total</u>
<b>2140 Psychological Services</b>				
<b>100 Personnel Services – Salaries</b>				
100 Personnel Services – Salaries	14,997.00	29,884.00		44,881.00
<b>Total Personnel Services – Salaries</b>	<b>\$14,997.00</b>	<b>\$29,884.00</b>		<b>\$44,881.00</b>
<b>200 Personnel Services – Employee Benefits</b>				
210 Group Insurance – Contracted Provider	1,470.00	2,930.00		4,400.00
220 Social Security Contributions	1,124.00	2,239.00		3,363.00
230 PSERS Retirement Contributions	4,495.00	8,960.00		13,455.00
<b>Total Personnel Services – Employee Benefits</b>	<b>\$7,089.00</b>	<b>\$14,129.00</b>		<b>\$21,218.00</b>
<b>300 Purchased Professional and Technical Services</b>				
330 Other Professional Services	2,658.00			2,658.00
<b>Total Purchased Professional and Technical Services</b>	<b>\$2,658.00</b>			<b>\$2,658.00</b>
<b>600 Supplies</b>				
610 General Supplies	934.00			934.00
<b>Total Supplies</b>	<b>\$934.00</b>			<b>\$934.00</b>
<b>Total 2140 Psychological Services</b>	<b>\$25,678.00</b>	<b>\$44,013.00</b>		<b>\$69,691.00</b>



General Fund (10)

2170 Student Accounting Services

Elementary

Secondary

Federal

Total

100 Personnel Services – Salaries

100 Personnel Services – Salaries

48,299.00

**Total Personnel Services – Salaries**

**\$48,299.00**

200 Personnel Services – Employee Benefits

210 Group Insurance – Contracted Provider

3,630.00

220 Social Security Contributions

14,504.00

260 Workers’ Compensation

507.00

270 Group Insurance – Self-Insurance

20,722.00

**Total Personnel Services – Employee Benefits**

**\$39,363.00**

500 Other Purchased Services

550 Printing and Binding

849.00

580 Travel

155.00

**Total Other Purchased Services**

**\$1,004.00**

600 Supplies

610 General Supplies

64.00

**Total Supplies**

**\$64.00**

**Total 2170 Student Accounting Services**

**\$88,730.00**

**General Fund (10)**

	<u>Elementary</u>	<u>Secondary</u>	<u>Federal</u>	<u>Total</u>
<b>2200 Support Services – Instructional Staff</b>				
<b>100 Personnel Services – Salaries</b>				
100 Personnel Services – Salaries		46,509.00		46,509.00
<b>Total Personnel Services – Salaries</b>		<b>\$46,509.00</b>		<b>\$46,509.00</b>
<b>200 Personnel Services – Employee Benefits</b>				
220 Social Security Contributions		3,461.00		3,461.00
230 PSERS Retirement Contributions		13,967.00		13,967.00
270 Group Insurance – Self-Insurance		7,961.00		7,961.00
<b>Total Personnel Services – Employee Benefits</b>		<b>\$25,389.00</b>		<b>\$25,389.00</b>
<b>300 Purchased Professional and Technical Services</b>				
322 Professional Educational Services – lus	14,924.00			14,924.00
323 Professional Educational Services – Other Educational Agencies	12,555.00	3,750.00		16,305.00
330 Other Professional Services		5,451.00		5,451.00
<b>Total Purchased Professional and Technical Services</b>	<b>\$27,479.00</b>	<b>\$9,201.00</b>		<b>\$36,680.00</b>
<b>500 Other Purchased Services</b>				
580 Travel		180.00		180.00
<b>Total Other Purchased Services</b>		<b>\$180.00</b>		<b>\$180.00</b>
<b>Total 2200 Support Services – Instructional Staff</b>	<b>\$27,479.00</b>	<b>\$81,279.00</b>		<b>\$108,758.00</b>

**General Fund (10)**

2270 Instructional Staff Professional Development Services	<u>Elementary</u>	<u>Secondary</u>	<u>Federal</u>	<u>Total</u>
<b>100 Personnel Services – Salaries</b>				
100 Personnel Services – Salaries		46,509.00		46,509.00
<b>Total Personnel Services – Salaries</b>		<b>\$46,509.00</b>		<b>\$46,509.00</b>
<b>200 Personnel Services – Employee Benefits</b>				
220 Social Security Contributions		3,461.00		3,461.00
230 PSERS Retirement Contributions		13,967.00		13,967.00
270 Group Insurance – Self-Insurance		7,961.00		7,961.00
<b>Total Personnel Services – Employee Benefits</b>		<b>\$25,389.00</b>		<b>\$25,389.00</b>
<b>300 Purchased Professional and Technical Services</b>				
322 Professional Educational Services – Ius	14,924.00			14,924.00
323 Professional Educational Services – Other Educational Agencies	12,555.00	3,750.00		16,305.00
330 Other Professional Services		5,451.00		5,451.00
<b>Total Purchased Professional and Technical Services</b>	<b>\$27,479.00</b>	<b>\$9,201.00</b>		<b>\$36,680.00</b>
<b>500 Other Purchased Services</b>				
580 Travel		180.00		180.00
<b>Total Other Purchased Services</b>		<b>\$180.00</b>		<b>\$180.00</b>
<b>Total 2270 Instructional Staff Professional Development Services</b>	<b>\$27,479.00</b>	<b>\$81,279.00</b>		<b>\$108,758.00</b>

**General Fund (10)**

	<u>Elementary</u>	<u>Secondary</u>	<u>Federal</u>	<u>Total</u>
<b>2300 Support Services – Administration</b>				
<b>100 Personnel Services – Salaries</b>				
100 Personnel Services – Salaries	147,750.00	156,384.00		494,980.00
<b>Total Personnel Services – Salaries</b>	<b>\$147,750.00</b>	<b>\$156,384.00</b>		<b>\$494,980.00</b>
<b>200 Personnel Services – Employee Benefits</b>				
220 Social Security Contributions	11,062.00	11,691.00		36,078.00
230 PSERS Retirement Contributions	43,832.00	46,962.00		148,115.00
260 Workers’ Compensation	1,647.00	1,578.00		4,742.00
270 Group Insurance – Self-Insurance	38,839.00	43,397.00		110,194.00
<b>Total Personnel Services – Employee Benefits</b>	<b>\$95,380.00</b>	<b>\$103,628.00</b>		<b>\$299,129.00</b>
<b>300 Purchased Professional and Technical Services</b>				
310 Official / Administrative Services				20,425.00
330 Other Professional Services				24,969.00
340 Technical Services				119,415.00
<b>Total Purchased Professional and Technical Services</b>				<b>\$164,809.00</b>
<b>500 Other Purchased Services</b>				
520 Insurance – General				18,061.00
530 Communications		106.00		106.00
580 Travel				56.00
<b>Total Other Purchased Services</b>		<b>\$106.00</b>		<b>\$18,223.00</b>
<b>600 Supplies</b>				
610 General Supplies	485.00	4,139.00		9,112.00
630 Food				35.00
640 Books and Periodicals	440.00	540.00		980.00
<b>Total Supplies</b>	<b>\$925.00</b>	<b>\$4,679.00</b>		<b>\$10,127.00</b>
<b>700 Property</b>				
752 Capital Equipment – Original and Additional		2,705.00		3,643.00
<b>Total Property</b>		<b>\$2,705.00</b>		<b>\$3,643.00</b>
<b>800 Other Objects</b>				
810 Dues and Fees		1,201.00		21,484.00
<b>Total Other Objects</b>		<b>\$1,201.00</b>		<b>\$21,484.00</b>
<b>Total 2300 Support Services – Administration</b>	<b>\$244,055.00</b>	<b>\$268,703.00</b>		<b>\$1,012,395.00</b>

**General Fund (10)**

**2310 Board Services**

	<u>Elementary</u>	<u>Secondary</u>	<u>Federal</u>	<u>Total</u>
<b>100 Personnel Services – Salaries</b>				
100 Personnel Services – Salaries				8,000.00
<b>Total Personnel Services – Salaries</b>				<b>\$8,000.00</b>
<b>200 Personnel Services – Employee Benefits</b>				
220 Social Security Contributions				592.00
230 PSERS Retirement Contributions				2,402.00
<b>Total Personnel Services – Employee Benefits</b>				<b>\$2,994.00</b>
<b>300 Purchased Professional and Technical Services</b>				
310 Official / Administrative Services				8,659.00
330 Other Professional Services				24,969.00
<b>Total Purchased Professional and Technical Services</b>				<b>\$33,628.00</b>
<b>500 Other Purchased Services</b>				
520 Insurance – General				18,061.00
580 Travel				56.00
<b>Total Other Purchased Services</b>				<b>\$18,117.00</b>
<b>600 Supplies</b>				
610 General Supplies				2,304.00
<b>Total Supplies</b>				<b>\$2,304.00</b>
<b>800 Other Objects</b>				
810 Dues and Fees				18,328.00
<b>Total Other Objects</b>				<b>\$18,328.00</b>
<b>Total 2310 Board Services</b>				<b>\$83,371.00</b>

General Fund (10)

2330 Tax Assessment and Collection Services

Elementary

Secondary

Federal

Total

300 Purchased Professional and Technical Services

310 Official / Administrative Services

11,766.00

**Total Purchased Professional and Technical Services**

**\$11,766.00**

**Total 2330 Tax Assessment and Collection Services**

**\$11,766.00**

General Fund (10)

2350 Legal and Accounting Services

Elementary

Secondary

Federal

Total

300 Purchased Professional and Technical Services

340 Technical Services

119,415.00

**Total Purchased Professional and Technical Services**

**\$119,415.00**

**Total 2350 Legal and Accounting Services**

**\$119,415.00**

**General Fund (10)**

**2360 Office of the Superintendent / Executive Director Services**

Elementary                      Secondary                      Federal                      Total

<b>100</b>	<b><u>Personnel Services – Salaries</u></b>			
	100 Personnel Services – Salaries			182,846.00
	<b>Total Personnel Services – Salaries</b>			<b>\$182,846.00</b>
<b>200</b>	<b><u>Personnel Services – Employee Benefits</u></b>			
	220 Social Security Contributions			12,733.00
	230 PSERS Retirement Contributions			54,919.00
	260 Workers’ Compensation			1,517.00
	270 Group Insurance – Self-Insurance			27,958.00
	<b>Total Personnel Services – Employee Benefits</b>			<b>\$97,127.00</b>
<b>500</b>	<b><u>Other Purchased Services</u></b>			
	530 Communications		106.00	106.00
	<b>Total Other Purchased Services</b>		<b>\$106.00</b>	<b>\$106.00</b>
<b>600</b>	<b><u>Supplies</u></b>			
	610 General Supplies			2,184.00
	630 Food			35.00
	<b>Total Supplies</b>			<b>\$2,219.00</b>
<b>700</b>	<b><u>Property</u></b>			
	752 Capital Equipment – Original and Additional			938.00
	<b>Total Property</b>			<b>\$938.00</b>
<b>800</b>	<b><u>Other Objects</u></b>			
	810 Dues and Fees			1,955.00
	<b>Total Other Objects</b>			<b>\$1,955.00</b>
	<b>Total 2360 Office of the Superintendent / Executive Director Services</b>		<b>\$106.00</b>	<b>\$285,191.00</b>



**General Fund (10)**

	<u>Elementary</u>	<u>Secondary</u>	<u>Federal</u>	<u>Total</u>
<b>2380 Office of the Principal Services</b>				
<b>100 Personnel Services – Salaries</b>				
100 Personnel Services – Salaries	147,750.00	156,384.00		304,134.00
<b>Total Personnel Services – Salaries</b>	<b>\$147,750.00</b>	<b>\$156,384.00</b>		<b>\$304,134.00</b>
<b>200 Personnel Services – Employee Benefits</b>				
220 Social Security Contributions	11,062.00	11,691.00		22,753.00
230 PSERS Retirement Contributions	43,832.00	46,962.00		90,794.00
260 Workers’ Compensation	1,647.00	1,578.00		3,225.00
270 Group Insurance – Self-Insurance	38,839.00	43,397.00		82,236.00
<b>Total Personnel Services – Employee Benefits</b>	<b>\$95,380.00</b>	<b>\$103,628.00</b>		<b>\$199,008.00</b>
<b>600 Supplies</b>				
610 General Supplies	485.00	4,139.00		4,624.00
640 Books and Periodicals	440.00	540.00		980.00
<b>Total Supplies</b>	<b>\$925.00</b>	<b>\$4,679.00</b>		<b>\$5,604.00</b>
<b>700 Property</b>				
752 Capital Equipment – Original and Additional		2,705.00		2,705.00
<b>Total Property</b>		<b>\$2,705.00</b>		<b>\$2,705.00</b>
<b>800 Other Objects</b>				
810 Dues and Fees		1,201.00		1,201.00
<b>Total Other Objects</b>		<b>\$1,201.00</b>		<b>\$1,201.00</b>
<b>Total 2380 Office of the Principal Services</b>	<b>\$244,055.00</b>	<b>\$268,597.00</b>		<b>\$512,652.00</b>

General Fund (10)

2400 Support Services – Pupil Health

Elementary

Secondary

Federal

Total

100 Personnel Services – Salaries

100 Personnel Services – Salaries

113,867.00

**Total Personnel Services – Salaries**

**\$113,867.00**

200 Personnel Services – Employee Benefits

220 Social Security Contributions

8,810.00

230 PSERS Retirement Contributions

29,295.00

260 Workers’ Compensation

1,183.00

270 Group Insurance – Self-Insurance

2,956.00

299 All Other Employee Benefits

3,208.00

**Total Personnel Services – Employee Benefits**

**\$45,452.00**

300 Purchased Professional and Technical Services

340 Technical Services

2,565.00

**Total Purchased Professional and Technical Services**

**\$2,565.00**

600 Supplies

610 General Supplies

12,439.00

**Total Supplies**

**\$12,439.00**

**Total 2400 Support Services – Pupil Health**

**\$174,323.00**

General Fund (10)

2420 Medical Services

Elementary

Secondary

Federal

Total

300 Purchased Professional and Technical Services

340 Technical Services

565.00

**Total Purchased Professional and Technical Services**

**\$565.00**

**Total 2420 Medical Services**

**\$565.00**

General Fund (10)

2430 Dental Services

Elementary

Secondary

Federal

Total

300 Purchased Professional and Technical Services

340 Technical Services

2,000.00

**Total Purchased Professional and Technical Services**

**\$2,000.00**

**Total 2430 Dental Services**

**\$2,000.00**

General Fund (10)

2440 Nursing Services

Elementary

Secondary

Federal

Total

100 Personnel Services – Salaries

100 Personnel Services – Salaries

113,867.00

**Total Personnel Services – Salaries**

**\$113,867.00**

200 Personnel Services – Employee Benefits

220 Social Security Contributions

8,810.00

230 PSERS Retirement Contributions

29,295.00

260 Workers’ Compensation

1,183.00

270 Group Insurance – Self-Insurance

2,956.00

299 All Other Employee Benefits

3,208.00

**Total Personnel Services – Employee Benefits**

**\$45,452.00**

600 Supplies

610 General Supplies

12,439.00

**Total Supplies**

**\$12,439.00**

**Total 2440 Nursing Services**

**\$171,758.00**

General Fund (10)

2500 Support Services – Business

Elementary

Secondary

Federal

Total

100 Personnel Services – Salaries

100 Personnel Services – Salaries

187,018.00

**Total Personnel Services – Salaries**

**\$187,018.00**

200 Personnel Services – Employee Benefits

210 Group Insurance – Contracted Provider

686.00

220 Social Security Contributions

13,997.00

230 PSERS Retirement Contributions

56,499.00

260 Workers' Compensation

1,675.00

270 Group Insurance – Self-Insurance

42,244.00

**Total Personnel Services – Employee Benefits**

**\$115,101.00**

300 Purchased Professional and Technical Services

310 Official / Administrative Services

123,231.00

340 Technical Services

3,630.00

**Total Purchased Professional and Technical Services**

**\$126,861.00**

400 Purchased Property Services

440 Rentals

3,163.00

**Total Purchased Property Services**

**\$3,163.00**

500 Other Purchased Services

530 Communications

61.00

580 Travel

2,254.00

**Total Other Purchased Services**

**\$2,315.00**

600 Supplies

610 General Supplies

7,475.00

630 Food

1,035.00

**Total Supplies**

**\$8,510.00**

700 Property

762 Capitalized Equipment - Replacement

7,820.00

**Total Property**

**\$7,820.00**

800 Other Objects

810 Dues and Fees

13,968.00

**Total Other Objects**

**\$13,968.00**

**Total 2500 Support Services – Business**

**\$464,756.00**

**General Fund (10)**

**2510 Fiscal Services**

Elementary                      Secondary                      Federal                      Total

<b>100</b>	<b><u>Personnel Services – Salaries</u></b>				
	100 Personnel Services – Salaries				187,018.00
<b>Total Personnel Services – Salaries</b>					<b>\$187,018.00</b>
<b>200</b>	<b><u>Personnel Services – Employee Benefits</u></b>				
	210 Group Insurance – Contracted Provider				686.00
	220 Social Security Contributions				13,997.00
	230 PSERS Retirement Contributions				56,499.00
	260 Workers' Compensation				1,675.00
	270 Group Insurance – Self-Insurance				42,244.00
<b>Total Personnel Services – Employee Benefits</b>					<b>\$115,101.00</b>
<b>300</b>	<b><u>Purchased Professional and Technical Services</u></b>				
	310 Official / Administrative Services				123,231.00
	340 Technical Services				3,630.00
<b>Total Purchased Professional and Technical Services</b>					<b>\$126,861.00</b>
<b>400</b>	<b><u>Purchased Property Services</u></b>				
	440 Rentals				3,163.00
<b>Total Purchased Property Services</b>					<b>\$3,163.00</b>
<b>500</b>	<b><u>Other Purchased Services</u></b>				
	530 Communications				61.00
	580 Travel				2,254.00
<b>Total Other Purchased Services</b>					<b>\$2,315.00</b>
<b>600</b>	<b><u>Supplies</u></b>				
	610 General Supplies				7,475.00
	630 Food				1,035.00
<b>Total Supplies</b>					<b>\$8,510.00</b>
<b>700</b>	<b><u>Property</u></b>				
	762 Capitalized Equipment - Replacement				7,820.00
<b>Total Property</b>					<b>\$7,820.00</b>
<b>800</b>	<b><u>Other Objects</u></b>				
	810 Dues and Fees				13,968.00
<b>Total Other Objects</b>					<b>\$13,968.00</b>
<b>Total 2510 Fiscal Services</b>					<b>\$464,756.00</b>

**General Fund (10)**

**2511 Supervision of Fiscal Services - Head of Component**

Elementary                      Secondary                      Federal                      Total

<b>100</b>	<b><u>Personnel Services – Salaries</u></b>			
	100 Personnel Services – Salaries			122,403.00
	<b>Total Personnel Services – Salaries</b>			<b>\$122,403.00</b>
<b>200</b>	<b><u>Personnel Services – Employee Benefits</u></b>			
	210 Group Insurance – Contracted Provider			686.00
	220 Social Security Contributions			9,187.00
	230 PSERS Retirement Contributions			37,095.00
	260 Workers' Compensation			1,675.00
	270 Group Insurance – Self-Insurance			21,930.00
	<b>Total Personnel Services – Employee Benefits</b>			<b>\$70,573.00</b>
<b>300</b>	<b><u>Purchased Professional and Technical Services</u></b>			
	310 Official / Administrative Services			123,231.00
	340 Technical Services			3,630.00
	<b>Total Purchased Professional and Technical Services</b>			<b>\$126,861.00</b>
<b>400</b>	<b><u>Purchased Property Services</u></b>			
	440 Rentals			3,163.00
	<b>Total Purchased Property Services</b>			<b>\$3,163.00</b>
<b>500</b>	<b><u>Other Purchased Services</u></b>			
	530 Communications			61.00
	580 Travel			2,254.00
	<b>Total Other Purchased Services</b>			<b>\$2,315.00</b>
<b>600</b>	<b><u>Supplies</u></b>			
	610 General Supplies			7,475.00
	630 Food			1,035.00
	<b>Total Supplies</b>			<b>\$8,510.00</b>
<b>700</b>	<b><u>Property</u></b>			
	762 Capitalized Equipment - Replacement			7,820.00
	<b>Total Property</b>			<b>\$7,820.00</b>
<b>800</b>	<b><u>Other Objects</u></b>			
	810 Dues and Fees			13,968.00
	<b>Total Other Objects</b>			<b>\$13,968.00</b>
	<b>Total 2511 Supervision of Fiscal Services - Head of Component</b>			<b>\$355,613.00</b>



General Fund (10)

2513 Receiving and Disbursing Funds Services

Elementary

Secondary

Federal

Total

100 Personnel Services – Salaries

100 Personnel Services – Salaries

30,769.00

**Total Personnel Services – Salaries**

**\$30,769.00**

200 Personnel Services – Employee Benefits

220 Social Security Contributions

2,320.00

230 PSERS Retirement Contributions

9,240.00

270 Group Insurance – Self-Insurance

6,622.00

**Total Personnel Services – Employee Benefits**

**\$18,182.00**

**Total 2513 Receiving and Disbursing Funds Services**

**\$48,951.00**

General Fund (10)

2514 Payroll Services

Elementary

Secondary

Federal

Total

**100 Personnel Services – Salaries**

100 Personnel Services – Salaries

33,846.00

**Total Personnel Services – Salaries**

**\$33,846.00**

**200 Personnel Services – Employee Benefits**

220 Social Security Contributions

2,490.00

230 PSERS Retirement Contributions

10,164.00

270 Group Insurance – Self-Insurance

13,692.00

**Total Personnel Services – Employee Benefits**

**\$26,346.00**

**Total 2514 Payroll Services**

**\$60,192.00**

**General Fund (10)**

	<u>Elementary</u>	<u>Secondary</u>	<u>Federal</u>	<u>Total</u>
<b>2600 Operation and Maintenance of Plant Services</b>				
<b>100 Personnel Services – Salaries</b>				
100 Personnel Services – Salaries				418,695.00
<b>Total Personnel Services – Salaries</b>				<b>\$418,695.00</b>
<b>200 Personnel Services – Employee Benefits</b>				
220 Social Security Contributions				32,735.00
230 PSERS Retirement Contributions				123,719.00
260 Workers’ Compensation				4,025.00
270 Group Insurance – Self-Insurance				107,098.00
<b>Total Personnel Services – Employee Benefits</b>				<b>\$267,577.00</b>
<b>300 Purchased Professional and Technical Services</b>				
390 Other Purchased Professional and Technical Services				24,496.00
<b>Total Purchased Professional and Technical Services</b>				<b>\$24,496.00</b>
<b>400 Purchased Property Services</b>				
410 Cleaning Services				85,573.00
420 Utility Services				135,884.00
430 Repairs and Maintenance Services				136,277.00
440 Rentals				9,764.00
460 Extermination Services				1,145.00
<b>Total Purchased Property Services</b>				<b>\$368,643.00</b>
<b>500 Other Purchased Services</b>				
523 General Property and Liability Insurance				93,504.00
530 Communications				46,246.00
<b>Total Other Purchased Services</b>				<b>\$139,750.00</b>
<b>600 Supplies</b>				
610 General Supplies		55,098.00		55,098.00
620 Energy				73,713.00
<b>Total Supplies</b>		<b>\$55,098.00</b>		<b>\$128,811.00</b>
<b>700 Property</b>				
752 Capital Equipment – Original and Additional				3,879.00
762 Capitalized Equipment - Replacement				9,528.00
<b>Total Property</b>				<b>\$13,407.00</b>
<b>800 Other Objects</b>				
810 Dues and Fees				260.00
<b>Total Other Objects</b>				<b>\$260.00</b>
<b>Total 2600 Operation and Maintenance of Plant Services</b>		<b>\$55,098.00</b>		<b>\$1,361,639.00</b>

General Fund (10)

	<u>Elementary</u>	<u>Secondary</u>	<u>Federal</u>	<u>Total</u>
<b>2610 Supervision of Operation and Maintenance of Plant Services</b>				
<b>100 Personnel Services – Salaries</b>				
100 Personnel Services – Salaries				61,005.00
<b>Total Personnel Services – Salaries</b>				<b>\$61,005.00</b>
<b>200 Personnel Services – Employee Benefits</b>				
220 Social Security Contributions				4,665.00
230 PSERS Retirement Contributions				18,320.00
<b>Total Personnel Services – Employee Benefits</b>				<b>\$22,985.00</b>
<b>Total 2610 Supervision of Operation and Maintenance of Plant Services</b>				<b>\$83,990.00</b>

General Fund (10)

	<u>Elementary</u>	<u>Secondary</u>	<u>Federal</u>	<u>Total</u>
<b>2611 Supervision of Operation and Maintenance of Plant Services – Head of Component</b>				
<b>100 Personnel Services – Salaries</b>				
100 Personnel Services – Salaries				61,005.00
<b>Total Personnel Services – Salaries</b>				<b>\$61,005.00</b>
<b>200 Personnel Services – Employee Benefits</b>				
220 Social Security Contributions				4,665.00
230 PSERS Retirement Contributions				18,320.00
<b>Total Personnel Services – Employee Benefits</b>				<b>\$22,985.00</b>
<b>Total 2611 Supervision of Operation and Maintenance of Plant Services – Head of Component</b>				<b>\$83,990.00</b>

General Fund (10)

	<u>Elementary</u>	<u>Secondary</u>	<u>Federal</u>	<u>Total</u>
<b>2620 Operation of Buildings Services</b>				
<b>100 Personnel Services – Salaries</b>				
100 Personnel Services – Salaries				357,690.00
<b>Total Personnel Services – Salaries</b>				<b>\$357,690.00</b>
<b>200 Personnel Services – Employee Benefits</b>				
220 Social Security Contributions				28,070.00
230 PSERS Retirement Contributions				105,399.00
260 Workers’ Compensation				4,025.00
270 Group Insurance – Self-Insurance				107,098.00
<b>Total Personnel Services – Employee Benefits</b>				<b>\$244,592.00</b>
<b>400 Purchased Property Services</b>				
410 Cleaning Services				84,863.00
420 Utility Services				135,884.00
430 Repairs and Maintenance Services				136,277.00
440 Rentals				9,764.00
460 Extermination Services				1,145.00
<b>Total Purchased Property Services</b>				<b>\$367,933.00</b>
<b>500 Other Purchased Services</b>				
523 General Property and Liability Insurance				93,504.00
530 Communications				46,246.00
<b>Total Other Purchased Services</b>				<b>\$139,750.00</b>
<b>600 Supplies</b>				
610 General Supplies		55,098.00		55,098.00
620 Energy				73,713.00
<b>Total Supplies</b>		<b>\$55,098.00</b>		<b>\$128,811.00</b>
<b>700 Property</b>				
752 Capital Equipment – Original and Additional				3,879.00
762 Capitalized Equipment - Replacement				9,528.00
<b>Total Property</b>				<b>\$13,407.00</b>
<b>800 Other Objects</b>				
810 Dues and Fees				260.00
<b>Total Other Objects</b>				<b>\$260.00</b>
<b>Total 2620 Operation of Buildings Services</b>		<b>\$55,098.00</b>		<b>\$1,252,443.00</b>

LEA : 122097203 Morrisville Borough SD

Printed 4/27/2018 3:41:33 PM

General Fund (10)

2630 Care and Upkeep of Grounds Services

Elementary

Secondary

Federal

Total

400 Purchased Property Services

410 Cleaning Services

710.00

**Total Purchased Property Services**

**\$710.00**

**Total 2630 Care and Upkeep of Grounds Services**

**\$710.00**

General Fund (10)

2660 Safety and Security Services

Elementary

Secondary

Federal

Total

300 Purchased Professional and Technical Services

390 Other Purchased Professional and Technical Services

24,496.00

**Total Purchased Professional and Technical Services**

**\$24,496.00**

**Total 2660 Safety and Security Services**

**\$24,496.00**



General Fund (10)

	<u>Elementary</u>	<u>Secondary</u>	<u>Federal</u>	<u>Total</u>
<b>2700 Student Transportation Services</b>				
<b>100 Personnel Services – Salaries</b>				
100 Personnel Services – Salaries				48,733.00
<b>Total Personnel Services – Salaries</b>				<b>\$48,733.00</b>
<b>200 Personnel Services – Employee Benefits</b>				
210 Group Insurance – Contracted Provider				4,275.00
220 Social Security Contributions				14,635.00
260 Workers’ Compensation				312.00
270 Group Insurance – Self-Insurance				9,420.00
<b>Total Personnel Services – Employee Benefits</b>				<b>\$28,642.00</b>
<b>300 Purchased Professional and Technical Services</b>				
323 Professional Educational Services – Other Educational Agencies				658.00
<b>Total Purchased Professional and Technical Services</b>				<b>\$658.00</b>
<b>500 Other Purchased Services</b>				
513 Contracted Carriers				91,299.00
516 Student Transportation Services From the IU				256,125.00
<b>Total Other Purchased Services</b>				<b>\$347,424.00</b>
<b>600 Supplies</b>				
620 Energy				8,973.00
<b>Total Supplies</b>				<b>\$8,973.00</b>
<b>700 Property</b>				
752 Capital Equipment – Original and Additional				3,843.00
<b>Total Property</b>				<b>\$3,843.00</b>
<b>Total 2700 Student Transportation Services</b>				<b>\$438,273.00</b>

General Fund (10)

2720 Vehicle Operation Services

Elementary

Secondary

Federal

Total

100 Personnel Services – Salaries

100 Personnel Services – Salaries

48,733.00

**Total Personnel Services – Salaries**

**\$48,733.00**

200 Personnel Services – Employee Benefits

210 Group Insurance – Contracted Provider

4,275.00

220 Social Security Contributions

14,635.00

260 Workers’ Compensation

312.00

270 Group Insurance – Self-Insurance

9,420.00

**Total Personnel Services – Employee Benefits**

**\$28,642.00**

300 Purchased Professional and Technical Services

323 Professional Educational Services – Other Educational Agencies

658.00

**Total Purchased Professional and Technical Services**

**\$658.00**

500 Other Purchased Services

513 Contracted Carriers

91,299.00

516 Student Transportation Services From the IU

256,125.00

**Total Other Purchased Services**

**\$347,424.00**

600 Supplies

620 Energy

8,973.00

**Total Supplies**

**\$8,973.00**

700 Property

752 Capital Equipment – Original and Additional

3,843.00

**Total Property**

**\$3,843.00**

**Total 2720 Vehicle Operation Services**

**\$438,273.00**

General Fund (10)

	<u>Elementary</u>	<u>Secondary</u>	<u>Federal</u>	<u>Total</u>
<b>2800 Support Services – Central</b>				
<b>100 Personnel Services – Salaries</b>				
100 Personnel Services – Salaries				104,162.00
<b>Total Personnel Services – Salaries</b>				<b>\$104,162.00</b>
<b>200 Personnel Services – Employee Benefits</b>				
220 Social Security Contributions				7,628.00
230 PSERS Retirement Contributions				31,094.00
270 Group Insurance – Self-Insurance				51,687.00
<b>Total Personnel Services – Employee Benefits</b>				<b>\$90,409.00</b>
<b>300 Purchased Professional and Technical Services</b>				
340 Technical Services				8,136.00
<b>Total Purchased Professional and Technical Services</b>				<b>\$8,136.00</b>
<b>500 Other Purchased Services</b>				
580 Travel				675.00
<b>Total Other Purchased Services</b>				<b>\$675.00</b>
<b>600 Supplies</b>				
610 General Supplies				2,610.00
640 Books and Periodicals				85,032.00
<b>Total Supplies</b>				<b>\$87,642.00</b>
<b>700 Property</b>				
752 Capital Equipment – Original and Additional				93,797.00
<b>Total Property</b>				<b>\$93,797.00</b>
<b>Total 2800 Support Services – Central</b>				<b>\$384,821.00</b>

General Fund (10)

2810 Planning, Research, Development and Evaluation Services

Elementary

Secondary

Federal

Total

100 Personnel Services – Salaries

100 Personnel Services – Salaries 104,162.00

**Total Personnel Services – Salaries \$104,162.00**

200 Personnel Services – Employee Benefits

220 Social Security Contributions 7,628.00

230 PSERS Retirement Contributions 31,094.00

270 Group Insurance – Self-Insurance 51,687.00

**Total Personnel Services – Employee Benefits \$90,409.00**

300 Purchased Professional and Technical Services

340 Technical Services 8,136.00

**Total Purchased Professional and Technical Services \$8,136.00**

500 Other Purchased Services

580 Travel 675.00

**Total Other Purchased Services \$675.00**

600 Supplies

610 General Supplies 2,610.00

640 Books and Periodicals 85,032.00

**Total Supplies \$87,642.00**

700 Property

752 Capital Equipment – Original and Additional 93,797.00

**Total Property \$93,797.00**

**Total 2810 Planning, Research, Development and Evaluation Services**

**\$384,821.00**

General Fund (10)

2900 Other Support Services

Elementary

Secondary

Federal

Total

500 Other Purchased Services

595 IU Payments By Withholding

4,565.00

599 Other Miscellaneous Purchased Services

44,945.00

**Total Other Purchased Services**

**\$49,510.00**

**Total 2900 Other Support Services**

**\$49,510.00**

General Fund (10)

2910 Support Services Not Listed Elsewhere In the 2000 Series

Elementary

Secondary

Federal

Total

500 Other Purchased Services

595 IU Payments By Withholding

4,565.00

599 Other Miscellaneous Purchased Services

44,945.00

**Total Other Purchased Services**

**\$49,510.00**

**Total 2910 Support Services Not Listed Elsewhere In the 2000 Series**

**\$49,510.00**

**General Fund (10)**

<b>3000 Operation of Non-Instructional Services</b>	<b><u>Total</u></b>
<b>100 Personnel Services – Salaries</b>	
100 Personnel Services – Salaries	156,358.00
<b>Total Personnel Services – Salaries</b>	<b>\$156,358.00</b>
<b>200 Personnel Services – Employee Benefits</b>	
220 Social Security Contributions	11,884.00
230 PSERS Retirement Contributions	42,226.00
270 Group Insurance – Self-Insurance	3,881.00
<b>Total Personnel Services – Employee Benefits</b>	<b>\$57,991.00</b>
<b>300 Purchased Professional and Technical Services</b>	
310 Official / Administrative Services	69,038.00
322 Professional Educational Services – Ius	29,434.00
390 Other Purchased Professional and Technical Services	42,515.00
<b>Total Purchased Professional and Technical Services</b>	<b>\$140,987.00</b>
<b>400 Purchased Property Services</b>	
430 Repairs and Maintenance Services	20,274.00
<b>Total Purchased Property Services</b>	<b>\$20,274.00</b>
<b>500 Other Purchased Services</b>	
510 Student Transportation Services	87,059.00
520 Insurance – General	6,674.00
580 Travel	1,414.00
<b>Total Other Purchased Services</b>	<b>\$95,147.00</b>
<b>600 Supplies</b>	
610 General Supplies	54,817.00
<b>Total Supplies</b>	<b>\$54,817.00</b>
<b>800 Other Objects</b>	
810 Dues and Fees	9,929.00
<b>Total Other Objects</b>	<b>\$9,929.00</b>
<b>Total 3000 Operation of Non-Instructional Services</b>	<b>\$535,503.00</b>

**General Fund (10)**

**3200 Student Activities**

	<u>Elementary</u>	<u>Secondary</u>	<u>Federal</u>	<u>Total</u>
<b>100 Personnel Services – Salaries</b>				
100 Personnel Services – Salaries				156,358.00
<b>Total Personnel Services – Salaries</b>				<b>\$156,358.00</b>
<b>200 Personnel Services – Employee Benefits</b>				
220 Social Security Contributions				11,884.00
230 PSERS Retirement Contributions				42,226.00
270 Group Insurance – Self-Insurance				3,881.00
<b>Total Personnel Services – Employee Benefits</b>				<b>\$57,991.00</b>
<b>300 Purchased Professional and Technical Services</b>				
310 Official / Administrative Services				69,038.00
322 Professional Educational Services – lus				29,434.00
390 Other Purchased Professional and Technical Services				697.00
<b>Total Purchased Professional and Technical Services</b>				<b>\$99,169.00</b>
<b>400 Purchased Property Services</b>				
430 Repairs and Maintenance Services				20,274.00
<b>Total Purchased Property Services</b>				<b>\$20,274.00</b>
<b>500 Other Purchased Services</b>				
510 Student Transportation Services				87,059.00
520 Insurance – General				6,674.00
580 Travel				1,414.00
<b>Total Other Purchased Services</b>				<b>\$95,147.00</b>
<b>600 Supplies</b>				
610 General Supplies				54,817.00
<b>Total Supplies</b>				<b>\$54,817.00</b>
<b>800 Other Objects</b>				
810 Dues and Fees				9,929.00
<b>Total Other Objects</b>				<b>\$9,929.00</b>
<b>Total 3200 Student Activities</b>				<b>\$493,685.00</b>



General Fund (10)

3300 Community Services

Elementary

Secondary

Federal

Total

300 Purchased Professional and Technical Services

390 Other Purchased Professional and Technical Services

41,818.00

**Total Purchased Professional and Technical Services**

**\$41,818.00**

**Total 3300 Community Services**

**\$41,818.00**

**General Fund (10)**

**5000 Other Expenditures and Financing Uses**

**Total**

**800 Other Objects**

830 Interest	138,278.00
880 Refunds of Prior Years' Receipts	4,940.00

<b>Total Other Objects</b>	<b>\$143,218.00</b>
----------------------------	---------------------

**900 Other Uses of Funds**

910 Redemption of Principal	621,000.00
920 Authority Obligations	53,244.00
930 Fund Transfers	66,400.00
932 Capital Reserve Fund Transfers Applicable To Fund 32	600,000.00

<b>Total Other Uses of Funds</b>	<b>\$1,340,644.00</b>
----------------------------------	-----------------------

<b>Total 5000 Other Expenditures and Financing Uses</b>	<b>\$1,483,862.00</b>
---	-----------------------

General Fund (10)

5100 Debt Service / Other Expenditures and Financing Uses	<u>Elementary</u>	<u>Secondary</u>	<u>Federal</u>	<u>Total</u>
<b>800 Other Objects</b>				
830 Interest				138,278.00
880 Refunds of Prior Years' Receipts				4,940.00
<b>Total Other Objects</b>				<b>\$143,218.00</b>
<b>900 Other Uses of Funds</b>				
910 Redemption of Principal				621,000.00
920 Authority Obligations				53,244.00
<b>Total Other Uses of Funds</b>				<b>\$674,244.00</b>
<b>Total 5100 Debt Service / Other Expenditures and Financing Uses</b>				<b>\$817,462.00</b>

LEA : 122097203 Morrisville Borough SD

Printed 4/27/2018 3:41:38 PM

General Fund (10)

5110 Debt Service

Elementary

Secondary

Federal

Total

800 Other Objects

830 Interest

138,278.00

**Total Other Objects**

**\$138,278.00**

900 Other Uses of Funds

910 Redemption of Principal

621,000.00

920 Authority Obligations

53,244.00

**Total Other Uses of Funds**

**\$674,244.00**

**Total 5110 Debt Service**

**\$812,522.00**

LEA : 122097203 Morrisville Borough SD

Printed 4/27/2018 3:41:38 PM

General Fund (10)

	<u>Elementary</u>	<u>Secondary</u>	<u>Federal</u>	<u>Total</u>
5130 Refund of Prior Year Revenues / Receipts				
800 <u>Other Objects</u>				
880 Refunds of Prior Years' Receipts				4,940.00
<b>Total Other Objects</b>				<b>\$4,940.00</b>
<b>Total 5130 Refund of Prior Year Revenues / Receipts</b>				<b>\$4,940.00</b>

LEA : 122097203 Morrisville Borough SD

Printed 4/27/2018 3:41:38 PM

General Fund (10)

5200 Interfund Transfers – Out

Elementary

Secondary

Federal

Total

900 Other Uses of Funds

930 Fund Transfers

66,400.00

932 Capital Reserve Fund Transfers Applicable To Fund 32

600,000.00

**Total Other Uses of Funds**

**\$666,400.00**

**Total 5200 Interfund Transfers – Out**

**\$666,400.00**

LEA : 122097203 Morrisville Borough SD

Printed 4/27/2018 3:41:38 PM

General Fund (10)

5230 Capital Projects Fund Transfers

Elementary

Secondary

Federal

Total

900 Other Uses of Funds

932 Capital Reserve Fund Transfers Applicable To Fund 32

600,000.00

**Total Other Uses of Funds**

**\$600,000.00**

**Total 5230 Capital Projects Fund Transfers**

**\$600,000.00**

General Fund (10)

5250 Enterprise Fund Transfers

Elementary

Secondary

Federal

Total

900 Other Uses of Funds

930 Fund Transfers

66,400.00

**Total Other Uses of Funds**

**\$66,400.00**

**Total 5250 Enterprise Fund Transfers**

**\$66,400.00**



**Capital Reserve Fund - § 1431 (32)**

**2000 Support Services**

**700 Property**

756 Capitalized Technology Hardware and Equipment – Original

118,972.00

**Total Property**

**\$118,972.00**

**Total 2000 Support Services**

**\$118,972.00**

LEA : 122097203 Morrisville Borough SD

Printed 4/27/2018 3:41:35 PM

Capital Reserve Fund - § 1431 (32)

2600 Operation and Maintenance of Plant Services

Elementary

Secondary

Federal

Total

700 Property

756 Capitalized Technology Hardware and Equipment – Original

118,972.00

**Total Property**

**\$118,972.00**

**Total 2600 Operation and Maintenance of Plant Services**

**\$118,972.00**

LEA : 122097203 Morrisville Borough SD

Printed 4/27/2018 3:41:35 PM

Capital Reserve Fund - § 1431 (32)

2660 Safety and Security Services

Elementary

Secondary

Federal

Total

700 Property

756 Capitalized Technology Hardware and Equipment – Original

118,972.00

**Total Property**

**\$118,972.00**

**Total 2660 Safety and Security Services**

**\$118,972.00**

**Capital Reserve Fund - § 1431 (32)**

**4000 Facilities Acquisition, Construction and Improvement Services**

**Total**

**300 Purchased Professional and Technical Services**

330 Other Professional Services

13,128.00

**Total Purchased Professional and Technical Services**

**\$13,128.00**

**Total 4000 Facilities Acquisition, Construction and Improvement Services**

**\$13,128.00**

Capital Reserve Fund - § 1431 (32)

4400 Architecture and Engineering Services / Educational Specifications – Improvements

Elementary

Secondary

Federal

Total

300 Purchased Professional and Technical Services

330 Other Professional Services

13,128.00

**Total Purchased Professional and Technical Services**

**\$13,128.00**

**Total 4400 Architecture and Engineering Services / Educational Specifications – Improvements**

**\$13,128.00**

**Other Capital Projects Fund (39)**

**5000 Other Expenditures and Financing Uses**

**Total**

**900 Other Uses of Funds**

930 Fund Transfers

567.00

**Total Other Uses of Funds**

**\$567.00**

**Total 5000 Other Expenditures and Financing Uses**

**\$567.00**

LEA : 122097203 Morrisville Borough SD

Printed 4/27/2018 3:41:39 PM

Other Capital Projects Fund (39)

5200 Interfund Transfers – Out

Elementary

Secondary

Federal

Total

900 Other Uses of Funds

930 Fund Transfers

567.00

**Total Other Uses of Funds**

**\$567.00**

**Total 5200 Interfund Transfers – Out**

**\$567.00**

LEA : 122097203 Morrisville Borough SD

Printed 4/27/2018 3:41:39 PM

Other Capital Projects Fund (39)

5210 General Fund Transfers

Elementary

Secondary

Federal

Total

900 Other Uses of Funds

930 Fund Transfers

567.00

**Total Other Uses of Funds**

**\$567.00**

**Total 5210 General Fund Transfers**

**\$567.00**



	<u>General Fund(10)</u>	<u>Public Purpose Trust(27)</u>	<u>Other Compt Approved (28)</u>	<u>Athletic / Activity(29)</u>	<u>Capital Reserve (690, 1850)(31)</u>
<b>1000 Instruction</b>					
1100 Regular Programs - Elementary / Secondary	7,193,665.00				
1200 Special Programs - Elementary / Secondary	5,418,659.00				
1300 Vocational Education	769,844.00				
1400 Other Instructional Programs - Elementary / Secondary	4,703.00				
1800 Pre-Kindergarten	465,824.00				
<b>Total Instruction</b>	<b>\$13,852,695.00</b>				
<b>2000 Support Services</b>					
2100 Support Services - Students	733,929.00				
2200 Support Services - Instructional Staff	108,758.00				
2300 Support Services - Administration	1,012,395.00				
2400 Support Services - Pupil Health	174,323.00				
2500 Support Services - Business	464,756.00				
2600 Operation and Maintenance of Plant Services	1,361,639.00				
2700 Student Transportation Services	438,273.00				
2800 Support Services - Central	384,821.00				
2900 Other Support Services	49,510.00				
<b>Total Support Services</b>	<b>\$4,728,404.00</b>				
<b>3000 Operation of Non-Instructional Services</b>					
3200 Student Activities	493,685.00				
3300 Community Services	41,818.00				
<b>Total Operation of Non-Instructional Services</b>	<b>\$535,503.00</b>				
<b>4000 Facilities Acquisition, Construction and Improvement Services</b>					
4400 Architecture and Engineering Services / Educational Specifications - Improvements					
<b>Total Facilities Acquisition, Construction and Improvement Services</b>					
<b>5000 Other Expenditures and Financing Uses</b>					
5100 Debt Service / Other Expenditures and Financing Uses	817,462.00				
5200 Interfund Transfers - Out	666,400.00				
<b>Total Other Expenditures and Financing Uses</b>	<b>\$1,483,862.00</b>				
<b>TOTAL ACTUAL EXPENDITURES &amp; OTHER FINANCING USES</b>	<b>\$20,600,464.00</b>				

	<u>Capital Reserve (1431)(32)</u>	<u>Other Capital Projects Fund(39)</u>	<u>Debt Service(40)</u>	<u>Permanent(90)</u>	<u>Total</u>
<b>1000 Instruction</b>					
1100 Regular Programs - Elementary / Secondary					7,193,665.00
1200 Special Programs - Elementary / Secondary					5,418,659.00
1300 Vocational Education					769,844.00
1400 Other Instructional Programs - Elementary / Secondary					4,703.00
1800 Pre-Kindergarten					465,824.00
<b>Total Instruction</b>					<b>\$13,852,695.00</b>
<b>2000 Support Services</b>					
2100 Support Services - Students					733,929.00
2200 Support Services - Instructional Staff					108,758.00
2300 Support Services - Administration					1,012,395.00
2400 Support Services - Pupil Health					174,323.00
2500 Support Services - Business					464,756.00
2600 Operation and Maintenance of Plant Services	118,972.00				1,480,611.00
2700 Student Transportation Services					438,273.00
2800 Support Services - Central					384,821.00
2900 Other Support Services					49,510.00
<b>Total Support Services</b>	<b>\$118,972.00</b>				<b>\$4,847,376.00</b>
<b>3000 Operation of Non-Instructional Services</b>					
3200 Student Activities					493,685.00
3300 Community Services					41,818.00
<b>Total Operation of Non-Instructional Services</b>					<b>\$535,503.00</b>
<b>4000 Facilities Acquisition, Construction and Improvement Services</b>					
4400 Architecture and Engineering Services / Educational Specifications - Improvements	13,128.00				13,128.00
<b>Total Facilities Acquisition, Construction and Improvement Services</b>	<b>\$13,128.00</b>				<b>\$13,128.00</b>
<b>5000 Other Expenditures and Financing Uses</b>					
5100 Debt Service / Other Expenditures and Financing Uses					817,462.00
5200 Interfund Transfers - Out		567.00			666,967.00
<b>Total Other Expenditures and Financing Uses</b>		<b>\$567.00</b>			<b>\$1,484,429.00</b>
<b>TOTAL ACTUAL EXPENDITURES &amp; OTHER FINANCING USES</b>	<b>\$132,100.00</b>	<b>\$567.00</b>			<b>\$20,733,131.00</b>

**PSERS Salary Data (Salary Data should relate to the General Fund only)**

<b>Amount Description</b>	<b>Amount</b>
Total Salary Base for salaries subject to PSERS withholding	7,451,435.00
Total Federally Funded salaries subject to PSERS withholding	508,713.00
	<hr/>

**Title I Expenditure Data**

<b>Amount Description</b>	<b>Amount</b>
Expenditures Funded with Current Title I Funds	178,130.00
Expenditures Funded with Carry over Title I Funds	
<b>Total Title I Expenditure Data</b>	<hr/> <b>\$178,130.00</b> <hr/>

**Title I ARRA Amount**

<b>Amount Description</b>	<b>Amount</b>
Portion of Total Title I Expenditures funded with ARRA Title I	<hr/>

**Benefits for Staff Relative to Collective Bargaining Agreements**

	OBJECT	COVERED	NOT COVERED	TOTAL
<b>10 General Fund</b>	No Self Insurance data to report			
	211 Medical Insurance	1,301,678.00	26,565.00	1,328,243.00
	212 Dental Insurance			
	215 Eye Care Insurance			
	216 Prescription Insurance			
	271 Self-Insurance Medical Benefits			
	272 Self-Insurance Dental Benefits			
	275 Self-Insurance Eye Care Benefits			
	276 Self-Insurance Prescription Benefits			
	<b>FUND TOTAL</b>	<b>\$1,301,678.00</b>	<b>\$26,565.00</b>	<b>\$1,328,243.00</b>
<b>50 Enterprise Fund</b>	No Self Insurance data to report			
	211 Medical Insurance			
	212 Dental Insurance			
	215 Eye Care Insurance			
	216 Prescription Insurance			
	271 Self-Insurance Medical Benefits			
	272 Self-Insurance Dental Benefits			
	275 Self-Insurance Eye Care Benefits			
	276 Self-Insurance Prescription Benefits			
	<b>FUND TOTAL</b>			
<b>60 Internal Service Fund</b>	No Self Insurance data to report			
	211 Medical Insurance			
	212 Dental Insurance			
	215 Eye Care Insurance			
	216 Prescription Insurance			
	271 Self-Insurance Medical Benefits			
	272 Self-Insurance Dental Benefits			
	275 Self-Insurance Eye Care Benefits			
	276 Self-Insurance Prescription Benefits			
	<b>FUND TOTAL</b>			
<b>Total of All Funds</b>		<b>\$1,301,678.00</b>	<b>\$26,565.00</b>	<b>\$1,328,243.00</b>

LEA : 122097203 Morrisville Borough SD

Printed 4/27/2018 3:41:47 PM

Function	Special Education (Prior Year)	Nonspecial Education (Prior Year)	Total (Prior Year)	Special Education (Current Year)	Nonspecial Education (Current Year)	Total (Current Year)
2120 Guidance Services	61,221.00	297,773.00	358,994.00	88,032.00	299,859.00	387,891.00
2140 Psychological Services	11,075.00	53,870.00	64,945.00	15,816.00	53,875.00	69,691.00
2150 Speech Pathology and Audiology Services						
2160 Social Work Services						
2260 Instruction and Curriculum Development Services						
2350 Legal and Accounting Services	12,242.00	59,546.00	71,788.00	27,101.00	92,314.00	119,415.00
2420 Medical Services	585.00	2,845.00	3,430.00	128.00	437.00	565.00
2440 Nursing Services	26,376.00	128,289.00	154,665.00	38,981.00	132,777.00	171,758.00
2700 Student Transportation Services	81,810.00	397,917.00	479,727.00	99,466.00	338,807.00	438,273.00
<b>Total</b>	<b>\$193,309.00</b>	<b>\$940,240.00</b>	<b>\$1,133,549.00</b>	<b>\$269,524.00</b>	<b>\$918,069.00</b>	<b>\$1,187,593.00</b>

(PRINCIPAL AMOUNTS ONLY)

**GOVERNMENTAL FUNDS/ ACTIVITIES**

	Short-Term Borrowing	General Obligation Bonds/Notes	Authority Building Obligations	Other Long-Term Debt	Other Post-Employment Benefits (OPEB)	Compensated Absences	Net Pension Liability	Total
1. Debt at Beginning of Fiscal Year		5,752,000.00	164,376.00	187,933.00	411,833.00	331,125.00	21,528,000.00	28,375,267.00
2. Additional Debt Incurred During Year					135,235.00		4,489,000.00	4,624,235.00
3. Retirements and Repayments		621,000.00	53,244.00	90,933.00	111,291.00	19,689.00		896,157.00
4. Debt at End of Fiscal Year		5,131,000.00	111,132.00	97,000.00	435,777.00	311,436.00	26,017,000.00	32,103,345.00
5. Accreted Interest at End Of Fiscal Year								
6. Total Debt and Accreted Interest		5,131,000.00	111,132.00	97,000.00	435,777.00	311,436.00	26,017,000.00	32,103,345.00
7. Current Portion P&I - Due within 1 year		758,703.00	84,812.00	39,400.00				882,915.00
8. Interest Paid during current fiscal year		133,789.00	8,841.00					142,630.00

(PRINCIPAL AMOUNTS ONLY)

**PROPRIETARY FUNDS**

- 1. Debt at Beginning of Fiscal Year
- 2. Additional Debt Incurred During Year
- 3. Retirements and Repayments
- 4. Debt at End of Fiscal Year
- 5. Accreted Interest at End Of Fiscal Year
- 6. Total Debt and Accreted Interest
- 7. Current Portion P&I - Due within 1 year
- 8. Interest Paid during current fiscal year

**Total Principal and Interest Payments Made by Your School - All Funds**

Function	Fund		Principal (910)	Principal (920)	Interest (830)	Total (Principal +Interest)	Misc Other Uses (990)
5110	10	General Fund	621,000.00	53,244.00	138,278.00	812,522.00	
5110	20	Special Revenue Funds					
5110	30	Capital Projects Funds					
5110	40	Debt Service Fund					
5110	90	Permanent Fund					
5120	10	General Fund					
5120	20	Special Revenue Funds					
5120	30	Capital Projects Funds					
5120	40	Debt Service Fund					

<b>Total Debt Payments - Governmental Funds</b>			<b>\$621,000.00</b>	<b>\$53,244.00</b>	<b>\$138,278.00</b>	<b>\$812,522.00</b>	
---	--	--	---------------------	--------------------	---------------------	---------------------	--

Function	Fund		Principal (910)	Principal (920)	Interest (830)	Total (Principal +Interest)
5110	50	Enterprise Fund				
5110	60	Internal Service Fund				
5120	50	Enterprise Fund				
5120	60	Internal Service Fund				

<b>Total Debt Payments - Proprietary Funds</b>						
--	--	--	--	--	--	--

**Debt Details**  
**Governmental Funds/ Activities**

Debt Category	Debt Issue Date (MM/YYYY)	Principal Amounts Only				Current Portion Due Within One Year (Principal and Interest)	Interest Paid During Fiscal Year
		Debt at Beginning of Fiscal Year	Additions	Reductions / Repayments	Debt at End of Fiscal Year		
General Obligation Bonds/Notes – CIB	11/2014	4,735,000.00		435,000.00	4,300,000.00	537,881.00	101,681.00
General Obligation Bonds/Notes – CIB	09/2011	198,000.00		65,000.00	133,000.00	68,108.00	2,366.00
General Obligation Bonds/Notes – CIB	10/2001	819,000.00		121,000.00	698,000.00	152,714.00	29,742.00
Authority Building Obligations – CIB	11/2011	164,376.00		53,244.00	111,132.00	84,812.00	8,841.00
Other Long Term Debt/Liabilities		187,933.00		90,933.00	97,000.00	39,400.00	
Compensated Absences		331,125.00		19,689.00	311,436.00		
Other Post-Employment Benefits (OPEB)		411,833.00	135,235.00	111,291.00	435,777.00		
Net Pension Liability		21,528,000.00	4,489,000.00		26,017,000.00		
<b>Totals for Debt Entered:</b>		<b>\$28,375,267.00</b>	<b>\$4,624,235.00</b>	<b>\$896,157.00</b>	<b>\$32,103,345.00</b>	<b>\$882,915.00</b>	<b>\$142,630.00</b>



**General Fund (10)**

**Section 1: Tuition/Purchased Services as Reported within Expenditure Detail**

	<b>Amount</b>
Tuition Reported in General Fund Expenditures 1000-560	2,146,977.00
Purchased Services in General Fund Expenditures 1000-594 and 1000-597	

<b>Section 1 Total</b>	<b>\$2,146,977.00</b>
------------------------	-----------------------

**Section 2: Tuition Paid to Institution Types During Fiscal Year**

	<b>Tuition Paid For Nonspecial Education</b>	<b>Tuition Paid For Special Education</b>	<b>Total</b>
1 1306 Institutions			
2 Institutionalized Children's Programs			
3 Juveniles Incarcerated in Adult Facilities			
4 Residential Treatment Facilities			
5 Other Local Education Agencies		685,285.00	685,285.00
6 Brick and Mortar Charter Schools	143,982.00	149,631.00	293,613.00
7 Cyber Charter Schools	234,282.00	185,225.00	419,507.00
8 Career and Technology Centers	631,518.00		631,518.00
9 Approved Private Schools		59,285.00	59,285.00
10 PA Chartered Schools for the Deaf and Blind		38,680.00	38,680.00
11 Private Residential Rehabilitative Institutions		19,089.00	19,089.00
12 Juvenile Detention Centers			
13 Special Program Jointures			
14 Other Tuition Not Included Elsewhere In This Section			

<b>Section 2 Total</b>	<b>\$1,009,782.00</b>	<b>\$1,137,195.00</b>	<b>\$2,146,977.00</b>
------------------------	-----------------------	-----------------------	-----------------------

**Food Service / Cafeteria Operations Fund (51)**

**3000 Operation of Non-Instructional Services**

**Total**

**100 Personnel Services – Salaries**

100 Personnel Services – Salaries 189,563.00

**Total Personnel Services – Salaries \$189,563.00**

**200 Personnel Services – Employee Benefits**

210 Group Insurance – Contracted Provider 33,988.00

220 Social Security Contributions 29,959.00

**Total Personnel Services – Employee Benefits \$63,947.00**

**500 Other Purchased Services**

520 Insurance – General 2,379.00

570 Food Service Management 31,596.00

**Total Other Purchased Services \$33,975.00**

**600 Supplies**

610 General Supplies 13,404.00

630 Food 206,179.00

**Total Supplies \$219,583.00**

**700 Property**

740 Depreciation 2,681.00

**Total Property \$2,681.00**

**Total 3000 Operation of Non-Instructional Services \$509,749.00**

Food Service / Cafeteria Operations Fund (51)

	<u>Elementary</u>	<u>Secondary</u>	<u>Federal</u>	<u>Total</u>
<b>3100 Food Services</b>				
<b>100 Personnel Services – Salaries</b>				
100 Personnel Services – Salaries				189,563.00
<b>Total Personnel Services – Salaries</b>				<b>\$189,563.00</b>
<b>200 Personnel Services – Employee Benefits</b>				
210 Group Insurance – Contracted Provider				33,988.00
220 Social Security Contributions				29,959.00
<b>Total Personnel Services – Employee Benefits</b>				<b>\$63,947.00</b>
<b>500 Other Purchased Services</b>				
520 Insurance – General				2,379.00
570 Food Service Management				31,596.00
<b>Total Other Purchased Services</b>				<b>\$33,975.00</b>
<b>600 Supplies</b>				
610 General Supplies				13,404.00
630 Food				206,179.00
<b>Total Supplies</b>				<b>\$219,583.00</b>
<b>700 Property</b>				
740 Depreciation				2,681.00
<b>Total Property</b>				<b>\$2,681.00</b>
<b>Total 3100 Food Services</b>				<b>\$509,749.00</b>

**Internal Service Fund (60)**

**2000 Support Services**

**Total**

**200 Personnel Services – Employee Benefits**

270 Group Insurance – Self-Insurance

1,433,447.00

**Total Personnel Services – Employee Benefits**

**\$1,433,447.00**

**300 Purchased Professional and Technical Services**

310 Official / Administrative Services

51,101.00

**Total Purchased Professional and Technical Services**

**\$51,101.00**

**Total 2000 Support Services**

**\$1,484,548.00**

Internal Service Fund (60)

2300 Support Services – Administration

Elementary

Secondary

Federal

Total

200 Personnel Services – Employee Benefits

270 Group Insurance – Self-Insurance

1,433,447.00

**Total Personnel Services – Employee Benefits**

**\$1,433,447.00**

300 Purchased Professional and Technical Services

310 Official / Administrative Services

51,101.00

**Total Purchased Professional and Technical Services**

**\$51,101.00**

**Total 2300 Support Services – Administration**

**\$1,484,548.00**

Internal Service Fund (60)

2390 Other Administration Services

Elementary

Secondary

Federal

Total

200 Personnel Services – Employee Benefits

270 Group Insurance – Self-Insurance

1,433,447.00

**Total Personnel Services – Employee Benefits**

**\$1,433,447.00**

300 Purchased Professional and Technical Services

310 Official / Administrative Services

51,101.00

**Total Purchased Professional and Technical Services**

**\$51,101.00**

**Total 2390 Other Administration Services**

**\$1,484,548.00**

	<u>Food Service(51)</u>	<u>Child Care Operations(52)</u>	<u>Other Enterprise(58)</u>	<u>Internal Service(60)</u>	<u>Total</u>
<b>2000 Support Services</b>					
2300 Support Services - Administration				1,484,548.00	1,484,548.00
<b>Total Support Services</b>				<b>\$1,484,548.00</b>	<b>\$1,484,548.00</b>
<b>3000 Operation of Non-Instructional Services</b>					
3100 Food Services	509,749.00				509,749.00
<b>Total Operation of Non-Instructional Services</b>	<b>\$509,749.00</b>				<b>\$509,749.00</b>
<b>TOTAL ACTUAL EXPENDITURES &amp; OTHER FINANCING USES</b>	<b>\$509,749.00</b>			<b>\$1,484,548.00</b>	<b>\$1,994,297.00</b>